

# Recombinant Human CD150/SLAMF1 Protein (His Tag)

Catalog Number: PDEH100953



**Note:** Centrifuge before opening to ensure complete recovery of vial contents.

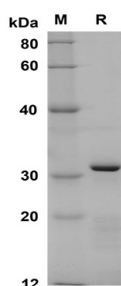
## Description

<b>Species</b>	Human
<b>Source</b>	E.coli-derived Human CD150 protein Ala21-Pro237, with an N-terminal His
<b>Mol_Mass</b>	23.8 kDa
<b>Accession</b>	Q13291
<b>Bio-activity</b>	Not validated for activity

## Properties

<b>Purity</b>	> 95% as determined by reducing SDS-PAGE.
<b>Endotoxin</b>	< 10 EU/mg of the protein as determined by the LAL method
<b>Storage</b>	Generally, lyophilized proteins are stable for up to 12 months when stored at -20 to -80 °C. Reconstituted protein solution can be stored at 4-8°C for 2-7 days. Aliquots of reconstituted samples are stable at < -20°C for 3 months.
<b>Shipping</b>	This product is provided as lyophilized powder which is shipped with ice packs.
<b>Formulation</b>	Lyophilized from a 0.2 µm filtered solution in PBS with 5% Trehalose and 5% Mannitol.
<b>Reconstitution</b>	It is recommended that sterile water be added to the vial to prepare a stock solution of 0.5 mg/mL. Concentration is measured by UV-Vis.

## Data



SDS-PAGE analysis of Human CD150 proteins, 2µg/lane of

Recombinant Human CD150 proteins was resolved with SDS-PAGE under reducing conditions, showing bands at 31 KD.

## Background

CD150/signaling lymphocytic activation molecule (SLAM) is a cell surface sialylated phosphoglycoprotein and belongs to the CD2 subset of the Ig superfamily of type I transmembrane glycoproteins. The CD150 receptor is expressed on thymocytes, activated and memory T cells, B cells, platelets, natural killer T cells, and mature dendritic cells, and is also detected on tumor cells of Hodgkin's lymphoma (HL) and diffuse large B-cell lymphoma with an activated B cell phenotype. Additionally, it is the immune cell receptor for measles virus (MV). As a self-ligand, CD150 performs diverse immunologic functions including T/B-cell costimulation, induction of IFN- $\gamma$  in Th1 T-cell clones, redirection of Th2 clones to a Th1 or Th0 phenotype, and inhibition of apoptosis in B cells. Furthermore, CD150 was shown to be the second receptor for measles virus in addition to CD46, and the distribution of SLAM on various cell lines is consistent with their susceptibility to clinical isolates of measles virus.

## For Research Use Only

A Reliable Research Partner in Life Science and Medicine  
Tel:400-999-2100

Email:[techsupport@elabscience.cn](mailto:techsupport@elabscience.cn)

Web:[www.elabscience.cn](http://www.elabscience.cn)

Rev. V1.3