

## PE/Elab Fluor® 594 Anti-Human CD11a Antibody[R7-1]

Catalog Number: E-AB-F1211P

Note: Centrifuge before opening to ensure complete recovery of vial contents.

### Description

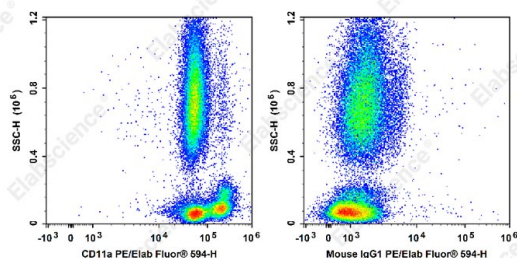
Reactivity	Human
Host	Mouse
Isotype	Mouse IgG1, κ
Clone No.	R7-1
Isotype Control	PE/Elab Fluor® 594 Mouse IgG1, κ Isotype Control[MOPC-21] [Product E-AB-F09792P]
Conjugation	PE/Elab Fluor® 594
Conjugation Information	PE/Elab Fluor® 594 is designed to be excited by the blue (488 nm), Green (532 nm) and yellow-green (561 nm) lasers and detected using an optical filter centered near 620 nm (e.g., a 610/20 nm bandpass filter).
Storage Buffer	Phosphate buffered solution, pH 7.2, containing 0.09% stabilizer.

### Applications

### Recommended usage

FCM	Each lot of this antibody is quality control tested by flow cytometric analysis. <b>The amount of the reagent is suggested to be used 5 μL of antibody per test (million cells in 100 μL staining volume or per 100 μL of whole blood).</b> Please check your vial before the experiment. Since applications vary, the appropriate dilutions must be determined for individual use.
-----	---

### Data



Human peripheral blood leucocytes are stained with PE/Elab Fluor® 594 Anti-Human CD11a Antibody[R7-1] (filled gray histogram) or PE/Elab Fluor® 594 Mouse IgG1, κ Isotype Control (empty black histogram).

### Preparation & Storage

Storage	Keep as concentrated solution. This product can be stored at 2-8°C for 24 months. Please protected from prolonged exposure to light and do not freeze.
Shipping	Ice bag

### Antigen Information

Alternate Names	CD11A;ITGAL;Integrin alpha-L;LFA-1A
Uniprot ID	P20701
Gene ID	3683

### For Research Use Only

## Background

CD11a is a 170-180 kD type I transmembrane glycoprotein also known as LFA-1 $\alpha$  chain and integrin  $\alpha$ L subunit. CD11a non-covalently associates with integrin  $\beta$ 2 (CD18) to form LFA-1. It is expressed on all leukocytes, including B and T lymphocytes, monocytes, macrophages, neutrophils, basophils and eosinophils. It is absent on non-hematopoietic tissues and platelets. CD11a plays a central role in leukocyte cell-cell interactions and is important in lymphocyte costimulation. CD11a/CD18 binds to ICAM-1 (CD54), ICAM-2 (CD102), and ICAM-3 (CD50).