

PE/Elab Fluor® 594 Anti-Human CD3 Antibody[HIT3b]

Catalog Number: AN00644P

Note: Centrifuge before opening to ensure complete recovery of vial contents.

Description

Reactivity	Human
Host	Mouse
Isotype	Mouse IgG1
Clone No.	HIT3b
Isotype Control	PE/Elab Fluor® 594 Mouse IgG1, κ Isotype Control[MOPC-21] [Product E-AB-F09792P]
Conjugation	PE/Elab Fluor® 594
Conjugation Information	PE/Elab Fluor® 594 is designed to be excited by the blue (488 nm), Green (532 nm) and yellow-green (561 nm) lasers and detected using an optical filter centered near 620 nm (e.g., a 610/20 nm bandpass filter).
Storage Buffer	Phosphate buffered solution, pH 7.2, containing 0.09% stabilizer and 1% protein protectant.

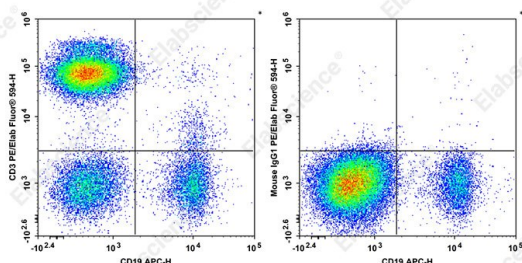
Applications

Recommended usage

FCM

Each lot of this antibody is quality control tested by flow cytometric analysis. **The amount of the reagent is suggested to be used 5 µL of antibody per test (million cells in 100 µL staining volume or per 100 µL of whole blood).** Please check your vial before the experiment. Since applications vary, the appropriate dilutions must be determined for individual use.

Data



Staining of normal human peripheral blood cells with PE/Elab Fluor® 594 Anti-Human CD3 Antibody[HIT3b] and APC Anti-Human CD19 Antibody[CB19] (left) or PE/Elab Fluor® 594 Mouse IgG1, κ Isotype Control (right). Cells in the lymphocytes gate were used for analysis.

Preparation & Storage

Storage	Keep as concentrated solution. This product can be stored at 2-8°C for 12 months. Please protected from prolonged exposure to light and do not freeze.
Shipping	Ice bag

Antigen Information

Alternate Names	T-cell surface glycoprotein CD3 epsilon chain;CD3E;T-cell surface antigen T3/Leu-4 epsilon chain;CD3e;CD3E;T3E;AN00644
------------------------	--

For Research Use Only

Toll-free: 1-888-852-8623
Web: www.elabscience.com

Tel: 1-832-243-6086
Email: techsupport@elabscience.com

Fax: 1-832-243-6017

Rev. V1.2

Uniprot ID

P07766

Gene ID

916

Background

CD3ε is a 20 kD chain of the CD3/T-cell receptor (TCR) complex which is composed of two CD3ε, one CD3γ, one CD3δ, one CD3ζ (CD247), and a T-cell receptor (α/β or γ/δ) heterodimer. It is found on all mature T lymphocytes, NK-T cells, and some thymocytes.

CD3, also known as T3, is a member of the immunoglobulin superfamily that plays a role in antigen recognition, signal transduction, and T cell activation.

For Research Use Only

Toll-free: 1-888-852-8623
Web: www.elabscience.com

Tel: 1-832-243-6086
Email: techsupport@elabscience.com

Fax: 1-832-243-6017

Rev. V1.2