

LAMP2/CD107b Monoclonal Antibody

catalog number: AN200231P

Note: Centrifuge before opening to ensure complete recovery of vial contents.

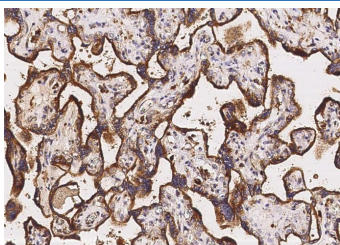
Description

Reactivity	Human
Immunogen	Recombinant Human LAMP2/CD107b Protein
Host	Mouse
Isotype	IgG1
Clone	5B12
Purification	Protein A
Buffer	0.2 µm filtered solution in PBS

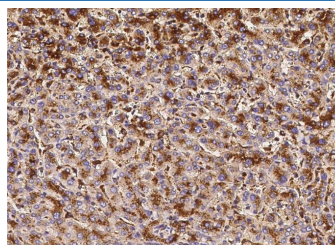
Applications Recommended Dilution

IHC-P	1:50-1:200
--------------	------------

Data



Immunohistochemistry of paraffin-embedded human placenta using LAMP2/CD107b Monoclonal Antibody at dilution of 1:60.



Immunohistochemistry of paraffin-embedded human liver using LAMP2/CD107b Monoclonal Antibody at dilution of 1:60.

Preparation & Storage

Storage	This antibody can be stored at 2°C-8°C for one month without detectable loss of activity. Antibody products are stable for twelve months from date of receipt when stored at -20°C to -80°C. Preservative-Free. Avoid repeated freeze-thaw cycles.
Shipping	Ice bag

Background

The protein encoded by this gene is a member of a family of membrane glycoproteins. This glycoprotein provides selectins with carbohydrate ligands. It may play a role in tumor cell metastasis. It may also function in the protection, maintenance, and adhesion of the lysosome. Alternative splicing of this gene results in multiple transcript variants encoding distinct proteins.

For Research Use Only

Toll-free: 1-888-852-8623
Web: www.elabscience.com

Tel: 1-832-243-6086
Email: techsupport@elabscience.com

Fax: 1-832-243-6017

Rev. V1.0