

Recombinant PERP1/MZB1 Monoclonal Antibody

catalog number: **AN300286P**

Note: Centrifuge before opening to ensure complete recovery of vial contents.

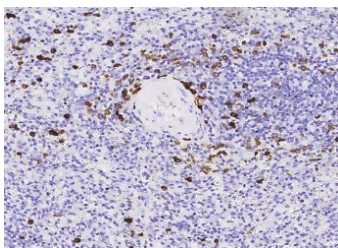
Description

Reactivity	Human
Immunogen	Recombinant Human PERP1 / MZB1 Protein
Host	Rabbit
Isotype	IgG
Clone	10C9
Purification	Protein A
Buffer	0.2 µm filtered solution in PBS

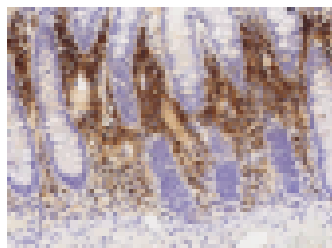
Applications Recommended Dilution

IHC-P	1:250-1:1000
--------------	--------------

Data



Immunohistochemistry of paraffin-embedded human spleen using PERP1 / MZB1 Monoclonal Antibody at dilution of 1:500.



Immunohistochemistry of paraffin-embedded human small intestine using PERP1 / MZB1 Monoclonal Antibody at dilution of 1:500.

Preparation & Storage

Storage	This antibody can be stored at 2°C-8°C for one month without detectable loss of activity. Antibody products are stable for twelve months from date of receipt when stored at -20°C to -80°C. Preservative-Free. Avoid repeated freeze-thaw cycles.
Shipping	Ice bag

Background

Associates with immunoglobulin M (IgM heavy and light chains and promotes IgM assembly and secretion. May exert its effect by acting as a molecular chaperone or as an oxidoreductase as it displays a low level of oxidoreductase activity (By similarity. Isoform 2 may be involved in regulation of apoptosis. Helps to diversify peripheral B-cell functions by regulating Ca(1+ stores, antibody secretion and integrin activation.

For Research Use Only