

Recombinant KLHL6 Monoclonal Antibody

catalog number: **AN300769L**

Note: Centrifuge before opening to ensure complete recovery of vial contents.

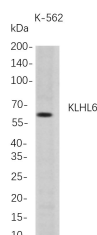
Description

Reactivity	Human
Immunogen	Recombinant Human KLHL6 protein
Host	Rabbit
Isotype	IgG, κ
Clone	B712
Purification	Protein A
Buffer	PBS, 50% glycerol, 0.05% Proclin 300, 0.05% protein protectant.

Applications

Applications	Recommended Dilution
WB	1:1000-5000
ICC/IF	1:100-300
IP	1:50-100

Data



Western Blot with Recombinant KLHL6 Monoclonal Antibody
at dilution of 1:1000 dilution. Lane A: K-562 whole cell
lysate.

Observed-MW:68 kDa

Preparation & Storage

Storage	Store at -20°C Valid for 12 months. Avoid freeze / thaw cycles.
Shipping	Ice bag

Background

This gene encodes a member of the kelch-like (KLHL) family of proteins, which is involved in B-lymphocyte antigen receptor signaling and germinal-center B-cell maturation. The encoded protein contains an N-terminal broad-complex, tramtrack and bric a brac (BTB) domain that facilitates protein binding and dimerization, a BTB and C-terminal kelch (BACK) domain, and six C-terminal kelch repeat domains. Naturally occurring mutations in this gene are associated with chronic lymphocytic leukemia. Alternative splicing results in multiple transcript variants.

For Research Use Only