

Recombinant beta-Catenin/CTNNB1 Monoclonal Antibody

catalog number: **AN300396P**

Note: Centrifuge before opening to ensure complete recovery of vial contents.

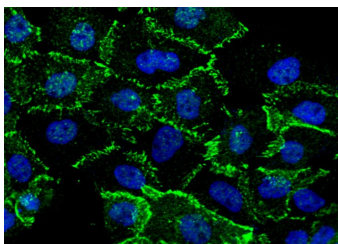
Description

Reactivity	Human
Immunogen	Recombinant Human beta-Catenin/CTNNB1 protein
Host	Rabbit
Isotype	IgG
Clone	9D1
Purification	Protein A
Buffer	0.2 µm filtered solution in PBS

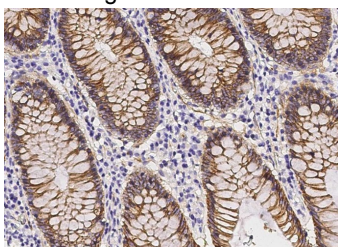
Applications Recommended Dilution

IHC-P	1:100-1:500
ICC/IF	:1:20-1:100
FCM	1:25-1:100

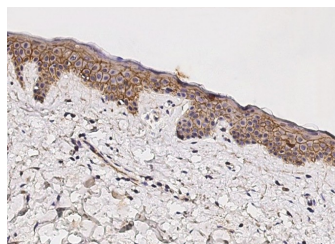
Data



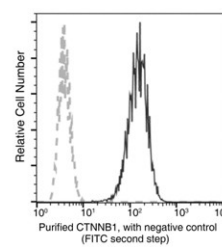
Immunofluorescence analysis of Human CTNNB1 in A431 cells. Cells were fixed with 4% PFA, permeabilized with 0.3% Triton X-100 in PBS, blocked with 10% serum, and incubated with rabbit anti-Human CTNNB1 monoclonal antibody (1:60) at 4°C overnight. Then cells were stained with the Alexa Fluor® 488-conjugated Goat Anti-rabbit IgG secondary antibody (green) and counterstained with DAPI (blue). Positive staining was localized to cells membrane.



Immunohistochemistry of paraffin-embedded human colon using beta-Catenin/CTNNB1 Monoclonal Antibody at dilution of 1:200.



Immunohistochemistry of paraffin-embedded human skin using beta-Catenin/CTNNB1 Monoclonal Antibody at dilution of 1:200.



Flow cytometric analysis of Human CTNNB1 (β-Catenin) expression on Hela cells. The cells were treated according to manufacturer's manual, stained with purified anti-Human CTNNB1 (β-Catenin), then a FITC-conjugated second step antibody. The fluorescence histograms were derived from gated events with the forward and side light-scatter characteristics of intact cells.

Preparation & Storage

For Research Use Only

Toll-free: 1-888-852-8623
Web: www.elabscience.com

Tel: 1-832-243-6086
Email: techsupport@elabscience.com

Fax: 1-832-243-6017

Rev. V1.0

Storage

This antibody can be stored at 2°C-8°C for one month without detectable loss of activity. Antibody products are stable for twelve months from date of receipt when stored at -20°C to -80°C. Preservative-Free. Avoid repeated freeze-thaw cycles.

Shipping

Ice bag

Background

The protein encoded by this gene is part of a complex of proteins that constitute adherens junctions (AJs). AJs are necessary for the creation and maintenance of epithelial cell layers by regulating cell growth and adhesion between cells. The encoded protein also anchors the actin cytoskeleton and may be responsible for transmitting the contact inhibition signal that causes cells to stop dividing once the epithelial sheet is complete. Finally, this protein binds to the product of the APC gene, which is mutated in adenomatous polyposis of the colon. Mutations in this gene are a cause of colorectal cancer (CRC), pilomatixoma (PTR), medulloblastoma (MDB), and ovarian cancer. Alternative splicing results in multiple transcript variants.

For Research Use Only