

Recombinant Albumin Monoclonal Antibody

catalog number: **AN300830L**

Note: Centrifuge before opening to ensure complete recovery of vial contents.

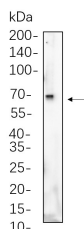
Description

Reactivity	Human;Mouse;Rat
Immunogen	Recombinant Human Albumin protein
Host	Rabbit
Isotype	IgG, κ
Clone	5B14
Purification	Protein A
Buffer	PBS, 50% glycerol, 0.05% Proclin 300, 0.05% protein protectant.

Applications Recommended Dilution

WB	1:2000-1:10000
-----------	----------------

Data



Western Blot with Recombinant Albumin Monoclonal Antibody at dilution of 1:1000 dilution. Lane A: huh-7 cell lysate.

Observed-MW:69 kDa

Calculated-MW:69 kDa

Preparation & Storage

Storage	Store at -20°C Valid for 12 months. Avoid freeze / thaw cycles.
Shipping	Ice bag

Background

This gene encodes the most abundant protein in human blood. This protein functions in the regulation of blood plasma colloid osmotic pressure and acts as a carrier protein for a wide range of endogenous molecules including hormones, fatty acids, and metabolites, as well as exogenous drugs. Additionally, this protein exhibits an esterase-like activity with broad substrate specificity. The encoded preproprotein is proteolytically processed to generate the mature protein. A peptide derived from this protein, EPI-X4, is an endogenous inhibitor of the CXCR4 chemokine receptor.

For Research Use Only