

Recombinant GOLM1/GP73 Monoclonal Antibody

catalog number: **AN300431P**

Note: Centrifuge before opening to ensure complete recovery of vial contents.

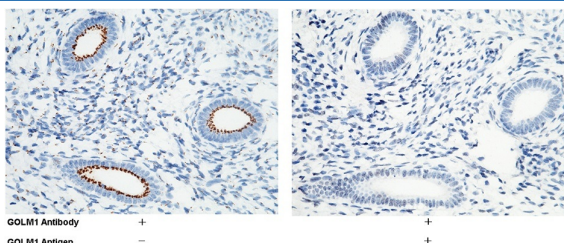
Description

Reactivity	Human
Immunogen	Recombinant Human GOLM1/GP73 protein
Host	Rabbit
Isotype	IgG
Clone	4B8
Purification	Protein A
Buffer	0.2 µm filtered solution in PBS

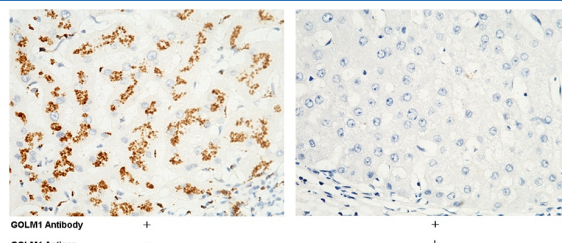
Applications Recommended Dilution

IHC-P	1:100-1:500
--------------	-------------

Data



Immunohistochemistry of paraffin-embedded human uterus using GOLM1/GP73 Monoclonal Antibody at dilution of 1:200. Positive staining was localized to cytoplasm of uterine gland. The left panel: tissue incubated with primary antibody; The right panel: tissue incubated with the mixture of primary antibody and antigen (recombinant protein).



Immunohistochemistry of paraffin-embedded human liver using GOLM1/GP73 Monoclonal Antibody at dilution of 1:200. Positive staining was localized to cytoplasm of hepatocyte and interlobular bile duct. The left panel: tissue incubated with primary antibody; The right panel: tissue incubated with the mixture of primary antibody and antigen (recombinant protein).

Preparation & Storage

Storage	This antibody can be stored at 2°C-8°C for one month without detectable loss of activity. Antibody products are stable for twelve months from date of receipt when stored at -20°C to -80°C. Preservative-Free. Avoid repeated freeze-thaw cycles.
Shipping	Ice bag

Background

The Golgi complex plays a key role in the sorting and modification of proteins exported from the endoplasmic reticulum. The protein encoded by this gene is a type II Golgi transmembrane protein. It processes proteins synthesized in the rough endoplasmic reticulum and assists in the transport of protein cargo through the Golgi apparatus. The expression of this gene has been observed to be upregulated in response to viral infection. Alternatively spliced transcript variants encoding the same protein have been described for this gene.

For Research Use Only