

Recombinant Ly6g Monoclonal Antibody

catalog number: **AN300878L**

Note: Centrifuge before opening to ensure complete recovery of vial contents.

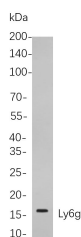
Description

Reactivity	Mouse
Immunogen	Recombinant Mouse Ly6g protein
Host	Rabbit
Isotype	IgG, κ
Clone	B825
Purification	Protein A
Buffer	PBS, 50% glycerol, 0.05% Proclin 300, 0.05% protein protectant.

Applications Recommended Dilution

IHC	1:1000-1:4000
WB	1:1000-1:5000
IF	1:200-1:1000
ELISA	1:5000-1:20000

Data



Western Blot with Recombinant Ly6g Monoclonal Antibody
at dilution of 1:1000 dilution. Lane A: Mouse kindey cells.

Observed-MW:14 kDa

Calculated-MW:14 kDa

Preparation & Storage

Storage	Store at -20°C Valid for 12 months. Avoid freeze / thaw cycles.
Shipping	Ice bag

Background

Predicted to enable acetylcholine receptor binding activity and acetylcholine receptor inhibitor activity. Predicted to be involved in acetylcholine receptor signaling pathway. Located in external side of plasma membrane. Is expressed in large intestine; small intestine; and spleen.

For Research Use Only

Toll-free: 1-888-852-8623
Web: www.elabscience.com

Tel: 1-832-243-6086
Email: techsupport@elabscience.com

Fax: 1-832-243-6017

Rev. V1.2