

Recombinant CD20 Monoclonal Antibody

catalog number: **AN301470L**

Note: Centrifuge before opening to ensure complete recovery of vial contents.

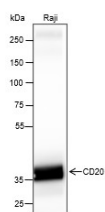
Description

Reactivity	Human;Rat;Mouse
Immunogen	Recombinant human CD20 fragment
Host	Rabbit
Isotype	IgG, κ
Clone	A165
Purification	Protein A purified
Buffer	PBS, 50% glycerol, 0.05% Proclin 300, 0.05% protein protectant.

Applications

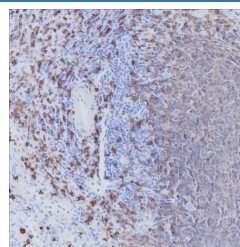
Applications	Recommended Dilution
WB	1:1000-1:5000
IHC	1:200-1:1000
FCM	1:50-1:100
IP	1:50-1:100

Data

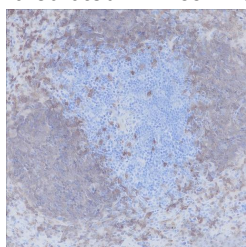


Western Blot with CD20 Monoclonal Antibody at dilution of 1:5000. Lane 1: Raji

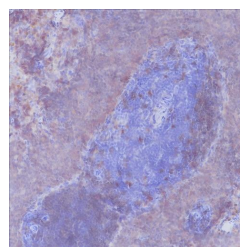
Observed-MW:35 kDa
Calculated-MW:33 kDa



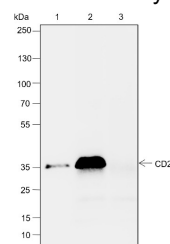
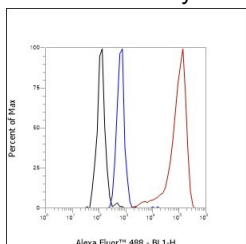
Immunohistochemistry of paraffin-embedded Human spleen using CD20 Monoclonal Antibody at dilution of 1:1000.



Immunohistochemistry of paraffin-embedded Mouse spleen using CD20 Monoclonal Antibody at dilution of 1:1000.



Immunohistochemistry of paraffin-embedded Rat spleen using CD20 Monoclonal Antibody at dilution of 1:1000.



For Research Use Only

Toll-free: 1-888-852-8623
Web: www.elabscience.com

Tel: 1-832-243-6086
Email: techsupport@elabscience.com

Fax: 1-832-243-6017

Rev. V1.0

Flow cytometric analysis of human CD20 expression on Ramos cells. Cells were stained with purified anti-Human CD20, then a Alexa Fluor 488-conjugated second step antibody. The histogram were derived from events with the forward and side light-scatter characteristics of intact cells.

Immunoprecipitation analysis using anti-CD20 Monoclonal Antibody. Western blot was performed from the immunoprecipitate using CD20 Monoclonal Antibody at a dilution of 1:100. Lane 1: 5% Input, Lane 2: CD20 Monoclonal Antibody, Lane 3: Rabbit monoclonal IgG Isotype

Observed-MW:35 kDa

Calculated-MW:33 kDa

Preparation & Storage

Storage Store at -20°C Valid for 12 months. Avoid freeze / thaw cycles.
Shipping Ice bag

Background

B-lymphocyte-specific membrane protein that plays a role in the regulation of cellular calcium influx necessary for the development, differentiation, and activation of B-lymphocytes. Functions as a store-operated calcium (SOC) channel component promoting calcium influx after activation by the B-cell receptor/BCR.

For Research Use Only

Toll-free: 1-888-852-8623
 Web: www.elabscience.com

Tel: 1-832-243-6086
 Email: techsupport@elabscience.com

Fax: 1-832-243-6017

Rev. V1.0