

## Recombinant PD-L1 Monoclonal Antibody

catalog number: **AN301623L**

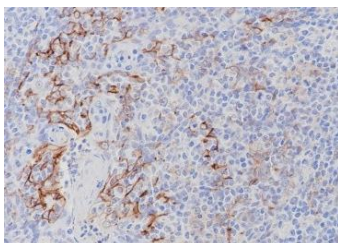
**Note:** Centrifuge before opening to ensure complete recovery of vial contents.

### Description

<b>Reactivity</b>	Human;
<b>Immunogen</b>	Recombinant human PD-L1 fragment
<b>Host</b>	Rabbit
<b>Isotype</b>	IgG, $\kappa$
<b>Clone</b>	A326
<b>Purification</b>	Protein A purified
<b>Buffer</b>	PBS, 50% glycerol, 0.05% Proclin 300, 0.05% protein protectant.

### Applications Recommended Dilution

<b>WB</b>	1:500-1:2000
<b>IHC</b>	1:200-1:1000



Immunohistochemistry of paraffin-embedded Human tonsil  
using PD-L1 Monoclonal Antibody at dilution of 1:1000.

### Preparation & Storage

<b>Storage</b>	Store at -20°C Valid for 12 months. Avoid freeze / thaw cycles.
<b>Shipping</b>	Ice bag

### Background

PD-1 is an immunoinhibitory receptor expressed by activated T cells, B cells, and myeloid cells. Engagement of PD-1 by PD-L1 leads to the inhibition of T cell receptor-mediated lymphocyte proliferation and cytokine secretion. In addition, PD-1 signaling can inhibit at least suboptimal levels of CD28-mediated costimulation. PD-L1 is expressed by antigen-presenting cells, including human peripheral blood monocytes stimulated with interferon- $\gamma$ , and activated human and murine dendritic cells.

### For Research Use Only