

CREB1 Monoclonal Antibody

catalog number: AN200060P

Note: Centrifuge before opening to ensure complete recovery of vial contents.

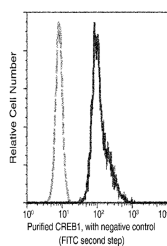
Description

Reactivity	Human
Immunogen	Recombinant Human CREB1 Protein
Host	Mouse
Isotype	IgG2b
Clone	9D14
Purification	Protein A
Buffer	0.2 µm filtered solution in PBS

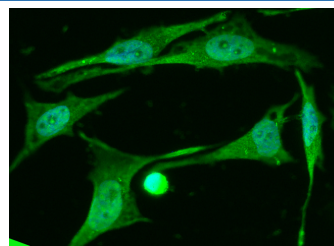
Applications

Applications	Recommended Dilution
ICC/IF	1:20-1:100
FCM	1:25-1:100

Data



Flow cytometric analysis of Human CREB1 expression on HepG2 cells. The cells were stained with purified anti-Human CREB1, then a FITC-conjugated second step antibody. The fluorescence histograms were derived from gated events with the forward and side light-scatter characteristics of intact cells.



Immunofluorescence analysis of Human CREB1 in HeLa cells. Cells were fixed with 4% PFA, permeabilized with 0.3% Triton X-100 in PBS, blocked with 10% serum, and incubated with Mouse anti-Human CREB1 Monoclonal Antibody (1:60) at 37°C 1 hour. Then cells were stained with the Alexa Fluor® 488-conjugated Goat Anti-mouse IgG secondary antibody (green) and counterstained with DAPI for nuclear staining (blue). Positive staining was localized to nucleus.

Preparation & Storage

Storage	This antibody can be stored at 2°C-8°C for one month without detectable loss of activity. Antibody products are stable for twelve months from date of receipt when stored at -20°C to -80°C. Preservative-Free. Avoid repeated freeze-thaw cycles.
Shipping	Ice bag

Background

This gene encodes a transcription factor that is a member of the leucine zipper family of DNA binding proteins. This protein binds as a homodimer to the cAMP-responsive element, an octameric palindrome. The protein is phosphorylated by several protein kinases, and induces transcription of genes in response to hormonal stimulation of the cAMP pathway. Alternate splicing of this gene results in several transcript variants encoding different isoforms.

For Research Use Only