

Recombinant Phospho-Smad2 (Ser250) Monoclonal Antibody

catalog number: **AN300960L**

Note: Centrifuge before opening to ensure complete recovery of vial contents.

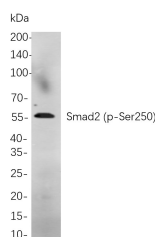
Description

Reactivity	Human;Mouse;Rat
Immunogen	A synthetic peptide corresponding to residues around (Ser250) of Human Phospho-Smad2
Host	Rabbit
Isotype	IgG, κ
Clone	B711
Purification	Protein A
Buffer	PBS, 50% glycerol, 0.05% Proclin 300, 0.05% protein protectant.

Applications

Applications	Recommended Dilution
IHC	1:100-1:500
WB	1:1000-1:5000
IF	1:200-1:1000
ELISA	1:5000-1:20000

Data



Western Blot with Recombinant Phospho-Smad2 (Ser250)
Monoclonal Antibody at dilution of 1:1000 dilution. Lane A:
A549 treated with TPA for 48 hours cells.

Observed-MW:58 kDa

Calculated-MW:58 kDa

Preparation & Storage

Storage	Store at -20°C Valid for 12 months. Avoid freeze / thaw cycles.
Shipping	Ice bag

Background

The protein encoded by this gene belongs to the SMAD, a family of proteins similar to the gene products of the Drosophila gene *mothers against decapentaplegic* (Mad) and the C. elegans gene Sma. SMAD proteins are signal transducers and transcriptional modulators that mediate multiple signaling pathways. This protein mediates the signal of the transforming growth factor (TGF)- β , and thus regulates multiple cellular processes, such as cell proliferation, apoptosis, and differentiation. This protein is recruited to the TGF- β receptors through its interaction with the SMAD anchor for receptor activation (SARA) protein. In response to TGF- β signal, this protein is phosphorylated by the TGF- β receptors. The phosphorylation induces the dissociation of this protein with SARA and the association with the family member SMAD4.

For Research Use Only

Toll-free: 1-888-852-8623
Web: www.elabscience.com

Tel: 1-832-243-6086
Email: techsupport@elabscience.com

Fax: 1-832-243-6017

Rev. V1.2