

FITC Anti-Rat CD1d Antibody[WTH-1]

Catalog Number: AN00661C

Note: Centrifuge before opening to ensure complete recovery of vial contents.

Description

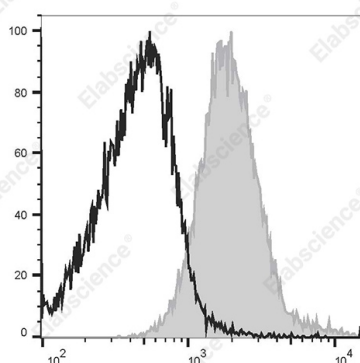
| | |
|--------------------------------|--|
| Reactivity | Rat |
| Host | Mouse |
| Isotype | Mouse IgG2a, κ |
| Clone No. | WTH-1 |
| Isotype Control | FITC Mouse IgG2a, κ Isotype Control[C1.18.4] [Product E-AB-F09802C] |
| Conjugation | FITC |
| Conjugation Information | FITC is designed to be excited by the Blue laser (488 nm) and detected using an optical filter centered near 530 nm (e.g., a 525/40 nm bandpass filter). |
| Storage Buffer | Phosphate buffered solution, pH 7.2, containing 0.09% stabilizer. |

Applications

Recommended usage

| | |
|------------|---|
| FCM | Each lot of this antibody is quality control tested by flow cytometric analysis. The amount of the reagent is suggested to be used 5 μL of antibody per test (million cells in 100 μL staining volume or per 100 μL of whole blood). Please check your vial before the experiment. Since applications vary, the appropriate dilutions must be determined for individual use. |
|------------|---|

Data



Staining of Rat splenocytes cells with FITC Anti-Rat CD1d Antibody[WTH-1] (left) or FITC Mouse IgG2a Isotype Control (right). Total viable cells were used for analysis.

Preparation & Storage

| | |
|-----------------|---|
| Storage | Keep as concentrated solution. This product can be stored at 2-8°C for 24 months. Please protected from prolonged exposure to light and do not freeze. |
| Shipping | Ice bag |

Antigen Information

| | |
|------------------------|--|
| Alternate Names | Antigen-presenting glycoprotein CD1d;Cd1d1 |
| Uniprot ID | Q63493 |
| Gene ID | 25109 |

For Research Use Only

Background

CD1d is a type I transmembrane protein and member of the MHC family that associates with β 2-microglobulin on the cell surface. CD1d is expressed by antigen presenting cells (such as dendritic cells, monocytes, macrophages and B cells), thymocytes, and intestinal epithelial cells. CD1d presents glycolipids to Va14i TCR+ iNKT cells.