

PE/Elab Fluor® 594 Anti-Mouse Ig light chain κ Antibody[RMK-45]

Catalog Number: AN00649P

Note: Centrifuge before opening to ensure complete recovery of vial contents.

Description

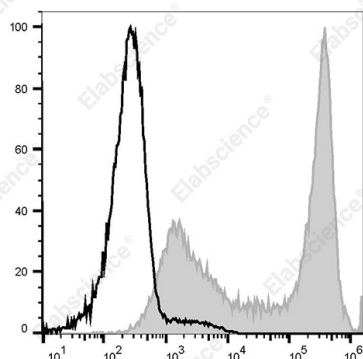
Reactivity	Mouse
Host	Rat
Isotype	Rat IgG
Clone No.	RMK-45
Isotype Control	PE/Elab Fluor® 594 Rat IgG1, κ Isotype Control[HRPN] [Product E-AB-F09822P]
Conjugation	PE/Elab Fluor® 594
Conjugation Information	PE/Elab Fluor® 594 is designed to be excited by the blue (488 nm), Green (532 nm) and yellow-green (561 nm) lasers and detected using an optical filter centered near 620 nm (e.g., a 610/20 nm bandpass filter).
Storage Buffer	Phosphate buffered solution, pH 7.2, containing 0.09% stabilizer.

Applications

Recommended usage

FCM	Each lot of this antibody is quality control tested by flow cytometric analysis. The amount of the reagent is suggested to be used 5 μL of antibody per test (million cells in 100 μL staining volume or per 100 μL of whole blood). Please check your vial before the experiment. Since applications vary, the appropriate dilutions must be determined for individual use.
------------	---

Data



Staining of C57BL/6 murine splenocytes cells with PE/Elab Fluor® 594 Anti-Mouse Ig light chain κ Antibody[RMK-45] (left) or PE/Elab Fluor® 594 Rat IgG Isotype Control (right). Total viable cells were used for analysis.

Preparation & Storage

Storage	Keep as concentrated solution. This product can be stored at 2-8°C for 24 months. Please protected from prolonged exposure to light and do not freeze.
Shipping	Ice bag

Antigen Information

Alternate Names	Immunoglobulin light chain kappa
Gene ID	243469

For Research Use Only

Background

The RMK-45 monoclonal antibody reacts with immunoglobulin light chain kappa in all tested mouse haplotype (Igh-a and b). It does not react with the lambda chain.