

Recombinant KLF4 Monoclonal Antibody

catalog number: **AN301092L**

Note: Centrifuge before opening to ensure complete recovery of vial contents.

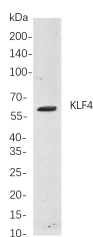
Description

Reactivity	Human;Mouse;Rat
Immunogen	Recombinant Human KLF4 protein
Host	Rabbit
Isotype	IgG, κ
Clone	B847
Purification	Protein A
Buffer	PBS, 50% glycerol, 0.05% Proclin 300, 0.05% protein protectant.

Applications

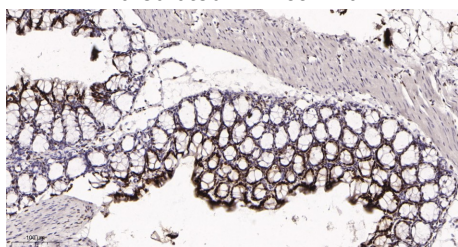
Applications	Recommended Dilution
IHC	1:200-1000
WB	1:1000-5000
IF	1:200-1000
ELISA	1:5000-20000

Data

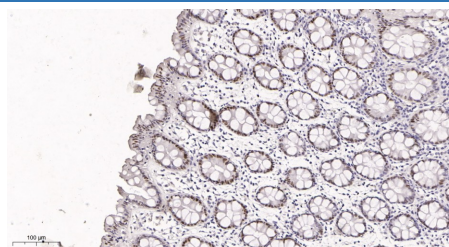


Western Blot with Recombinant KLF4 Monoclonal Antibody at dilution of 1:1000 dilution. Lane A: HCT-116 cells.

Observed-MW:60 kDa
Calculated-MW:55 kDa



Immunohistochemistry of paraffin-embedded mouse colon tissue using Recombinant KLF4 Monoclonal Antibody at dilution of 1:200.



Immunohistochemistry of paraffin-embedded human colon tissue using Recombinant KLF4 Monoclonal Antibody at dilution of 1:200.

Preparation & Storage

Storage	Store at -20°C Valid for 12 months. Avoid freeze / thaw cycles.
Shipping	Ice bag

Background

For Research Use Only

Toll-free: 1-888-852-8623
Web: www.elabscience.com

Tel: 1-832-243-6086
Email: techsupport@elabscience.com

Fax: 1-832-243-6017

Rev. V1.2

This gene encodes a protein that belongs to the Kruppel family of transcription factors. The encoded zinc finger protein is required for normal development of the barrier function of skin. The encoded protein is thought to control the G1-to-S transition of the cell cycle following DNA damage by mediating the tumor suppressor gene p53. Mice lacking this gene have a normal appearance but lose weight rapidly, and die shortly after birth due to fluid evaporation resulting from compromised epidermal barrier function. Alternative splicing results in multiple transcript variants encoding different isoforms.