

Recombinant Scavenging Receptor SR-BI Monoclonal Antibody

catalog number: **AN301932L**

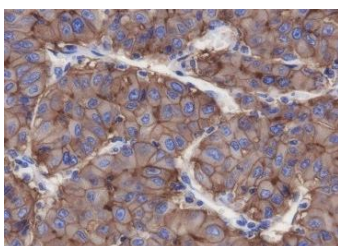
Note: *Centrifuge before opening to ensure complete recovery of vial contents.*

Description

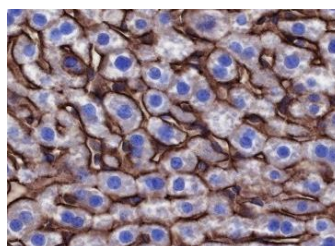
Reactivity	Human;Rat;Mouse
Immunogen	Recombinant human Scavenging Receptor SR-BI fragment
Host	Rabbit
Isotype	IgG, κ
Clone	A648
Purification	Protein A purified
Buffer	PBS, 50% glycerol, 0.05% Proclin 300, 0.05% protein protectant.

Applications Recommended Dilution

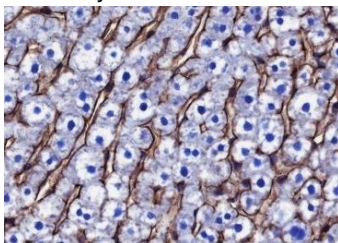
WB	1:1000
IHC	1:500-1:2000
IF	1:50



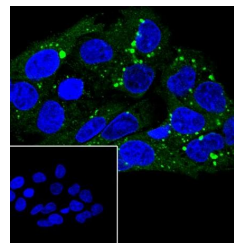
Immunohistochemistry of paraffin-embedded Human liver cancer using Scavenging Receptor SR-BI Monoclonal Antibody at dilution of 1:2000.



Immunohistochemistry of paraffin-embedded Mouse liver using Scavenging Receptor SR-BI Monoclonal Antibody at dilution of 1:2000.



Immunohistochemistry of paraffin-embedded Rat liver using Scavenging Receptor SR-BI Monoclonal Antibody at dilution of 1:2000.



Immunofluorescent analysis of (4% Paraformaldehyde) fixed HepG2 cells using anti-Scavenging Receptor SR-BI Monoclonal Antibody at dilution of 1:50.

Preparation & Storage

Storage	Store at -20°C Valid for 12 months. Avoid freeze / thaw cycles.
Shipping	Ice bag

Background

Scavenging receptor SR-BI (SCARB1) is a plasma membrane receptor for high density lipoprotein cholesterol (HDL). SCARB1 mediates cholesterol transfer to and from HDL. In addition, this protein is a receptor for hepatitis C virus glycoprotein E2 and facilitates cell entry by the virus, SARS-CoV2.

For Research Use Only