

## Recombinant Phospho-Chk2 (Thr68) Monoclonal Antibody

catalog number: **AN300595L**

**Note:** Centrifuge before opening to ensure complete recovery of vial contents.

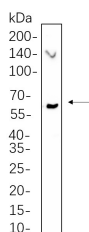
### Description

<b>Reactivity</b>	Human;Mouse;Rat
<b>Immunogen</b>	A synthetic peptide corresponding to residues around (Thr68) of Human Phospho-Chk2
<b>Host</b>	Rabbit
<b>Isotype</b>	IgG,k
<b>Clone</b>	B530
<b>Purification</b>	Protein A
<b>Buffer</b>	PBS, 50% glycerol, 0.05% Proclin 300, 0.05% protein protectant.

### Applications Recommended Dilution

<b>IHC</b>	1:200-1:1000
<b>WB</b>	1:2000-1:10000
<b>IF</b>	1:200-1:1000
<b>ELISA</b>	1:5000-1:20000
<b>IP</b>	1:50-1:200

### Data



Western Blot with Recombinant Phospho-Chk2 (Thr68)  
Monoclonal Antibody at dilution of 1:1000 dilution. Lane A:

NIH-3T3 whole cell lysate.

**Observed-MW:61 kDa**

**Calculated-MW:61 kDa**

### Preparation & Storage

<b>Storage</b>	Store at -20°C Valid for 12 months. Avoid freeze / thaw cycles.
<b>Shipping</b>	Ice bag

### Background

In response to DNA damage and replication blocks, cell cycle progression is halted through the control of critical cell cycle regulators. The protein encoded by this gene is a cell cycle checkpoint regulator and putative tumor suppressor. It contains a forkhead-associated protein interaction domain essential for activation in response to DNA damage and is rapidly phosphorylated in response to replication blocks and DNA damage. When activated, the encoded protein is known to inhibit CDC25C phosphatase, preventing entry into mitosis, and has been shown to stabilize the tumor suppressor protein p53, leading to cell cycle arrest in G1. In addition, this protein interacts with and phosphorylates BRCA1, allowing BRCA1 to restore survival after DNA damage.

### For Research Use Only

Toll-free: 1-888-852-8623  
Web: [www.elabscience.com](http://www.elabscience.com)

Tel: 1-832-243-6086  
Email: [techsupport@elabscience.com](mailto:techsupport@elabscience.com)

Fax: 1-832-243-6017

Rev. V1.2