

## Recombinant CD155/PVR/NECL5 Monoclonal Antibody

catalog number: **AN300299P**

**Note:** Centrifuge before opening to ensure complete recovery of vial contents.

### Description

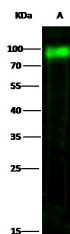
<b>Reactivity</b>	Human
<b>Immunogen</b>	Recombinant Human CD155 protein
<b>Host</b>	Rabbit
<b>Isotype</b>	IgG
<b>Clone</b>	5A7
<b>Purification</b>	Protein A
<b>Buffer</b>	0.2 µm filtered solution in PBS

### Applications

### Recommended Dilution

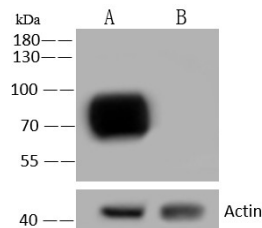
<b>WB</b>	1:500-1:2000
-----------	--------------

### Data



Western Blot with CD155 Monoclonal Antibody at dilution of 1:500 dilution. Lane A: HepG2 Whole Cell Lysate, Lysates/proteins at 30 µg per lane.

**Observed-MW:92 kDa, 70 kDa**  
**Calculated-MW:45 kDa**



Western Blot with CD155/PVR Monoclonal Antibody at dilution of 1:500 dilution. Lane A: 293T Whole Cell Lysate, Lane B: CD155/PVR konckout 293T Whole Cell Lysate, Lysates/proteins at 30 µg per lane.

**Observed-MW:92 kDa, 70 kDa**  
**Calculated-MW:45 kDa**

### Preparation & Storage

<b>Storage</b>	This antibody can be stored at 2°C-8°C for one month without detectable loss of activity. Antibody products are stable for twelve months from date of receipt when stored at -20°C to -80°C. Preservative-Free. Avoid repeated freeze-thaw cycles.
<b>Shipping</b>	Ice bag

### Background

The protein encoded by this gene is a transmembrane glycoprotein belonging to the immunoglobulin superfamily. The external domain mediates cell attachment to the extracellular matrix molecule vitronectin, while its intracellular domain interacts with the dynein light chain Tctex-1/DYNLT1. The gene is specific to the primate lineage, and serves as a cellular receptor for poliovirus in the first step of poliovirus replication. Multiple transcript variants encoding different isoforms have been found for this gene.

### For Research Use Only

Toll-free: 1-888-852-8623  
Web: [www.elabscience.com](http://www.elabscience.com)

Tel: 1-832-243-6086  
Email: [techsupport@elabscience.com](mailto:techsupport@elabscience.com)

Fax: 1-832-243-6017

Rev. V1.0