

Recombinant Phospho-PLCγ1 (Tyr783) Monoclonal Antibody

catalog number: **AN300148L**

Note: Centrifuge before opening to ensure complete recovery of vial contents.

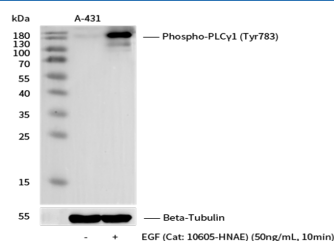
Description

Reactivity	Human
Immunogen	A synthetic phosphopeptide corresponding to residues around Tyr783 of the Human PLCγ1
Host	Rabbit
Isotype	IgG
Clone	4B14
Purification	Protein A
Buffer	10 mM sodium HEPES, 150 mM NaCl, 100 µg/mL protein protectant, 50% glycerol, pH 7.5

Applications Recommended Dilution

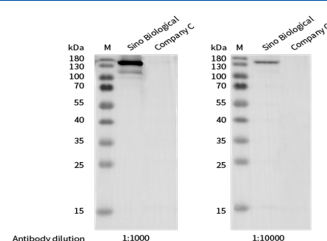
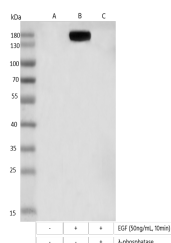
WB	1:500-1:5000
-----------	--------------

Data



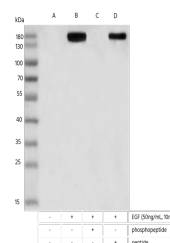
Western blot analysis of extracts from serum-starved A-431, untreated (-) or treated with EGF (Cat: PKSH031641) (50 ng/mL, 10min; +), using Phospho-PLCγ1 (Tyr783) Monoclonal Antibody at 1:1000 dilution (upper) or Beta-Tubulin Loading Control Antibody, Mouse MAb at 1:20000 dilution (lower).

Observed-MW: 148 kDa
Calculated-MW: 150 kDa



Western blot analysis of extracts from serum-starved A-431, treated with EGF (Cat: PKSH031641) (50 ng/mL, 10min), using Phospho-PLCγ1 (Tyr783) Monoclonal Antibody and other brands' antibodies (Company C) at dilution of 1:1000, 1:10000.

Observed-MW: 148 kDa
Calculated-MW: 150 kDa



For Research Use Only

Toll-free: 1-888-852-8623
Web: www.elabscience.com

Tel: 1-832-243-6086
Email: techsupport@elabscience.com

Fax: 1-832-243-6017

Rev. V1.1

Western blot analysis of extracts from serum-starved A431, untreated (line A); treated with EGF (Cat: PKSH031641)(50 ng/mL, 10min)(line B); treated with EGF and λ -phosphatase (line C) using Phospho-PLC γ 1 (Tyr783) Monoclonal Antibody at 1:1000 dilution.

Observed-MW:148 kDa

Calculated-MW:150 kDa

Western blot analysis of extracts from serum-starved A431, untreated (line A); treated with EGF (Cat: PKSH031641)(50 ng/mL, 10min), without peptide (line B) or antigen-specific phosphopeptide (line C) or antigen-specific peptide (line D) using Phospho-PLC γ 1 (Tyr783) Monoclonal Antibody at 1:1000 dilution.

Observed-MW:148 kDa

Calculated-MW:150 kDa

Preparation & Storage

Storage

This antibody can be stored at 2°C-8°C for one month without detectable loss of activity. Antibody products are stable for twelve months from date of receipt when stored at -20°C to -80°C. Preservative-Free. Avoid repeated freeze-thaw cycles.

Shipping

Ice bag

Background

The protein encoded by this gene catalyzes the formation of inositol 1,4,5-trisphosphate and diacylglycerol from phosphatidylinositol 4,5-bisphosphate. This reaction uses calcium as a cofactor and plays an important role in the intracellular transduction of receptor-mediated tyrosine kinase activators. For example, when activated by SRC, the encoded protein causes the Ras guanine nucleotide exchange factor RasGRP1 to translocate to the Golgi, where it activates Ras. Also, this protein has been shown to be a major substrate for heparin-binding growth factor 2 (acidic fibroblast growth factor)-activated tyrosine kinase. Two transcript variants encoding different isoforms have been found for this gene.

For Research Use Only

Toll-free: 1-888-852-8623

Web: www.elabscience.com

Tel: 1-832-243-6086

Email: techsupport@elabscience.com

Fax: 1-832-243-6017

Rev. V1.1