

Recombinant EpCAM/TROP-1/TACSTD1 Monoclonal Antibody

catalog number: **AN300200P**

Note: Centrifuge before opening to ensure complete recovery of vial contents.

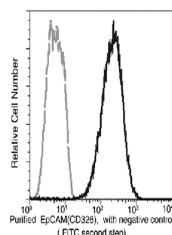
Description

Reactivity	Human
Immunogen	Recombinant Human EpCAM protein
Host	Rabbit
Isotype	IgG
Clone	8C2
Purification	Protein A
Buffer	0.2 µm filtered solution in PBS

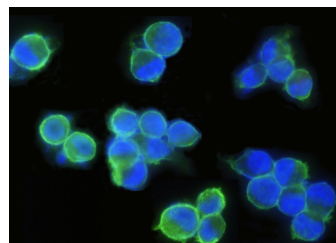
Applications

Applications	Recommended Dilution
WB	1:500-1:1000
FCM	1:100-1:500
IHC-P	1:1000-1:5000
ICC/IF	1:250-1:5000
IP	0.2-1 µL/mg of lysate

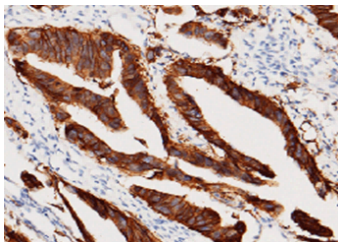
Data



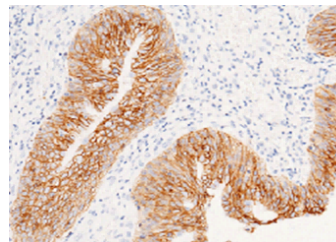
Flow cytometric analysis of anti-EpCAM (CD326) reactivity on SKBR3 cells. SKBR3 cells were stained with anti-EpCAM (CD326) Monoclonal Ab, then a FITC-conjugated second step antibody. The histogram were derived from the gated events based on light scattering characteristics of viable cells.



Immunofluorescence analysis of Human EpCAM in SKBR3 cells. Cells were fixed with 4% PFA, blocked with 10% serum, and incubated with Rabbit anti-Human EpCAM Monoclonal Antibody (1:500) at 4°C overnight. Then cells were stained with the Alexa Fluor® 488-conjugated Goat Anti-rabbit IgG secondary antibody (green) and counterstained with DAPI for nuclear staining (blue). Positive staining was localized to plasma membrane.

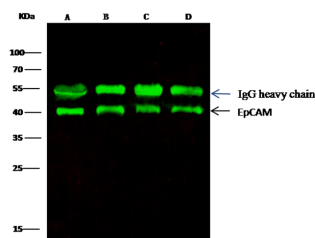


Immunohistochemistry of paraffin-embedded human colon carcinoma using EpCAM / TROP-1 / TACSTD1 Monoclonal Antibody at dilution of 1:2500.



Immunohistochemistry of paraffin-embedded human bladder carcinoma using EpCAM / TROP-1 / TACSTD1 Monoclonal Antibody at dilution of 1:2500.

For Research Use Only



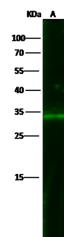
Immunoprecipitation analysis using 0.5 μ L anti-EpCAM Monoclonal Antibody and 15 μ L of 50 % Protein G agarose.

Western blot was performed from the immunoprecipitate using EpCAM Monoclonal Antibody at a dilution of 1:5000.

Lane A: 0.5 mg MCF-7 Whole Cell Lysate, Lane B: 0.5 mg A431 Whole Cell Lysate, Lane C: 0.5 mg HepG2 Whole Cell Lysate, Lane D: 0.5 mg Caco-2 Whole Cell Lysate

Observed-MW: 40 kDa

Calculated-MW: 40 kDa



Western Blot with EpCAM / TROP-1 / TACSTD1 Monoclonal Antibody at dilution of 1:500. Lane A: MCF7 Whole Cell Lysate, Lysates/proteins at 30 μ g per lane.

Observed-MW: 40 kDa

Calculated-MW: 40 kDa

Preparation & Storage

Storage

This antibody can be stored at 2°C-8°C for one month without detectable loss of activity. Antibody products are stable for twelve months from date of receipt when stored at -20°C to -80°C. Preservative-Free. Avoid repeated freeze-thaw cycles.

Shipping

Ice bag

Background

This gene encodes a carcinoma-associated antigen and is a member of a family that includes at least two type I membrane proteins. This antigen is expressed on most normal epithelial cells and gastrointestinal carcinomas and functions as a homotypic calcium-independent cell adhesion molecule. The antigen is being used as a target for immunotherapy treatment of human carcinomas. Mutations in this gene result in congenital tufting enteropathy.