

## Recombinant KLK-11/Kallikrein-11 Monoclonal Antibody

catalog number: **AN300204P**

**Note:** Centrifuge before opening to ensure complete recovery of vial contents.

### Description

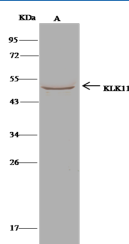
<b>Reactivity</b>	Human
<b>Immunogen</b>	Recombinant Human KLK-11 protein
<b>Host</b>	Rabbit
<b>Isotype</b>	IgG
<b>Clone</b>	8C7
<b>Purification</b>	Protein A
<b>Buffer</b>	0.2 µm filtered solution in PBS

### Applications

### Recommended Dilution

<b>WB</b>	1:500-1:1000
<b>IP</b>	0.2-1 µL/mg of lysate

### Data



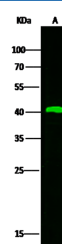
Immunoprecipitation analysis using 1 µL anti-KLK11 Monoclonal Antibody and 15 µl of 50 % Protein G agarose.

Western blot was performed from the immunoprecipitate using KLK11 Monoclonal Antibody at a dilution of 1:500.

Lane A: 0.5 mg HeLa Whole Cell Lysate

**Observed-MW: 49 kDa**

**Calculated-MW: 31 kDa**



Western Blot with KLK-11 / Kallikrein-11 Monoclonal Antibody at dilution of 1:500. Lane A: A549 Whole Cell Lysate, Lysates/proteins at 30 µg per lane.

**Observed-MW: 49 kDa**

**Calculated-MW: 31 kDa**

### Preparation & Storage

<b>Storage</b>	This antibody can be stored at 2°C-8°C for one month without detectable loss of activity. Antibody products are stable for twelve months from date of receipt when stored at -20°C to -80°C. Preservative-Free. Avoid repeated freeze-thaw cycles.
<b>Shipping</b>	Ice bag

### Background

Kallikreins are a subgroup of serine proteases having diverse physiological functions. Growing evidence suggests that many kallikreins are implicated in carcinogenesis and some have potential as novel cancer and other disease biomarkers. This gene is one of the fifteen kallikrein subfamily members located in a cluster on chromosome 16. Alternate splicing and the use of alternate promoters results in multiple transcript variants encoding distinct isoforms which are differentially expressed.

### For Research Use Only