

CD44 Antibody Polyclonal Antibody

catalog number: **AN100005P**

Note: Centrifuge before opening to ensure complete recovery of vial contents.

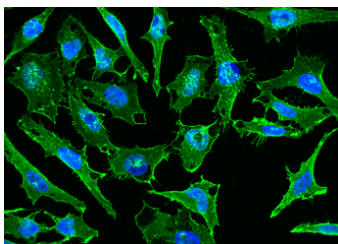
Description

Reactivity	Human
Immunogen	Recombinant Human CD44 Protein
Host	Rabbit
Isotype	IgG
Purification	Protein A & Antigen Affinity
Buffer	0.2 µm filtered solution in PBS

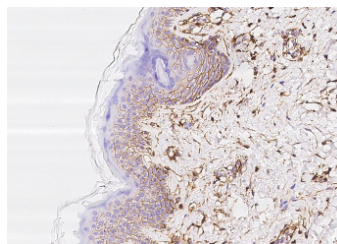
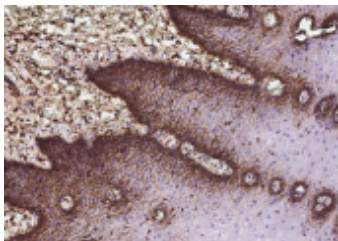
Applications Recommended Dilution

WB	1:500-1:2000
IHC-P	1:1000-1:10000
ICC/IF	1:100-1:500
IP	1-5 µL/mg of lysate

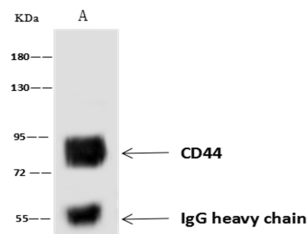
Data



Immunofluorescence analysis of CD44 in Hela cells. Cells were fixed with 4% PFA, blocked with 10% serum, and incubated with rabbit anti-Human CD44 polyclonal antibody (dilution ratio 1:200) at 4°C overnight. Then cells were stained with the Alexa Fluor®488-conjugated Goat Anti-rabbit IgG secondary antibody (green) and counterstained with DAPI for nuclear staining (blue). Positive staining was localized to Cell membrane.



Immunohistochemistry of paraffin-embedded human skin using CD44 Antibody Polyclonal Antibody at dilution of 1:10000.



For Research Use Only

Toll-free: 1-888-852-8623
Web: www.elabscience.com

Tel: 1-832-243-6086
Email: techsupport@elabscience.com

Fax: 1-832-243-6017

Rev. V1.1

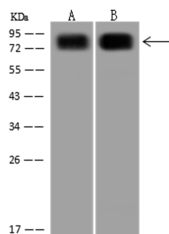
Immunohistochemistry of paraffin-embedded human esophagus using CD44 Antibody Polyclonal Antibody at dilution of 1:10000.

Immunoprecipitation analysis using 4 µL anti-CD44 rabbit polyclonal antibody and 60 µg of Immunomagnetic beads

Protein A/G. Western blot was performed from the immunoprecipitate using CD44 rabbit polyclonal antibody at a dilution of 1:100. Lane A:0.5 mg HeLa Whole Cell Lysate

Observed-MW:81 kDa

Calculated-MW:81 kDa



Western Blot with CD44 Antibody Polyclonal Antibody at dilution of 1:500. Lane A: TF-1 Whole Cell Lysate, Lane B: HL60 Whole Cell Lysate, Lane C: HeLa Whole Cell Lysate, Lysates/proteins at 30 µg per lane.

Observed-MW:81 kDa

Calculated-MW:81 kDa

Preparation & Storage

Storage

This antibody can be stored at 2°C-8°C for one month without detectable loss of activity. Antibody products are stable for twelve months from date of receipt when stored at -20°C to -80°C. Preservative-Free. Avoid repeated freeze-thaw cycles.

Shipping

Ice bag

Background

CD44 is a 80-95 kD glycoprotein also known as Hermes, Pgp1, H-CAM, or HUTCH. It is expressed on all leukocytes, endothelial cells, hepatocytes, and mesenchymal cells. As B and T cells become activated or progress to the memory stage, CD44 expression increases from a low or mid level of intensity to high expression levels. Thus, CD44 has been reported to be a valuable marker for memory cell subsets. CD44 is an adhesion molecule involved in leukocyte attachment to and rolling on endothelial cells, homing to peripheral lymphoid organs and to the sites of inflammation, and leukocyte aggregation.

For Research Use Only