

RPRD1B Monoclonal Antibody

catalog number: AN200141P

Note: Centrifuge before opening to ensure complete recovery of vial contents.

Description

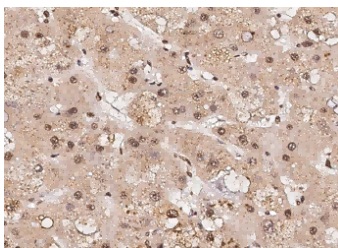
Reactivity	Human
Immunogen	Recombinant Human RPRD1B Protein
Host	Mouse
Isotype	IgG2b
Clone	13B3
Purification	Protein A
Buffer	0.2 µm filtered solution in PBS

Applications

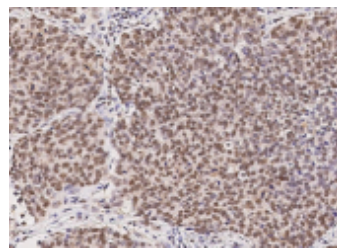
Recommended Dilution

IHC-P	1:50-1:200
--------------	------------

Data



Immunohistochemistry of paraffin-embedded human hepatoma using RPRD1B Monoclonal Antibody at dilution of 1:60.



Immunohistochemistry of paraffin-embedded human lung carcinoma using RPRD1B Monoclonal Antibody at dilution of 1:60.

Preparation & Storage

Storage	This antibody can be stored at 2°C-8°C for one month without detectable loss of activity. Antibody products are stable for twelve months from date of receipt when stored at -20°C to -80°C. Preservative-Free. Avoid repeated freeze-thaw cycles.
Shipping	Ice bag

Background

Interacts with phosphorylated C-terminal heptapeptide repeat domain (CTD of the largest RNA polymerase II subunit POLR2A, and participates in dephosphorylation of the CTD by RPAP2. Transcriptional regulator which enhances expression of CCND1. Promotes binding of RNA polymerase II to the CCND1 promoter and to the termination region before the poly-A site but decreases its binding after the poly-A site. Prevents RNA polymerase II from reading through the 3' end termination site and may allow it to be recruited back to the promoter through promotion of the formation of a chromatin loop. Also enhances the transcription of a number of other cell cycle-related genes including CDK2, CDK4, CDK6 and cyclin-E but not CDKN1A, CDKN2B or cyclin-A. Promotes cell proliferation.

For Research Use Only