

CK-18 Polyclonal Antibody

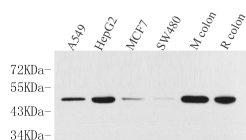
catalog number: E-AB-70095

Note: Centrifuge before opening to ensure complete recovery of vial contents.

Description	
Reactivity	Human;Mouse;Rat
Immunogen	KLH conjugated Synthetic peptide corresponding to Mouse Cytokeratin 18
Host	Rabbit
Isotype	IgG
Purification	Affinity purification
Conjugation	Unconjugated
Buffer	Phosphate buffered solution, pH 7.4, containing 0.05% stabilizer, 1% protein protectant and 50% glycerol.

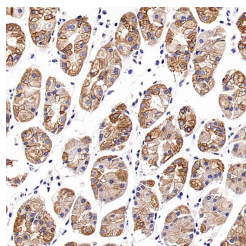
Applications	Recommended Dilution
WB	1:500-1:2000
IHC	1:200-1:800

Data

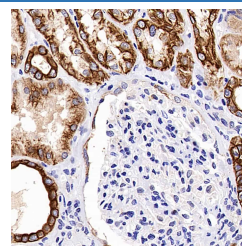
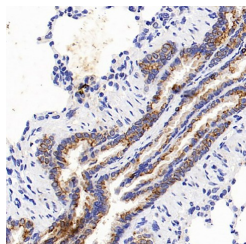


Western Blot analysis of various samples using CK-18 Polyclonal Antibody at dilution of 1:1000.

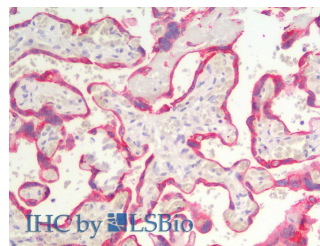
Observed-MW:48 kDa
Calculated-MW:48 kDa



Immunohistochemistry analysis of paraffin-embedded human stomach using CK-18 Polyclonal Antibody at dilution of 1:500.



Immunohistochemistry analysis of paraffin-embedded human kidney using CK-18 Polyclonal Antibody at dilution of 1:500.



Immunohistochemistry analysis of paraffin-embedded Human Placenta using CK-18 Polyclonal Antibody(Elabscience Product Detected by Lifespan).

For Research Use Only

Immunohistochemistry analysis of paraffin-embedded Rat lung using CK-18 Polyclonal Antibody at dilution of 1:500.

Preparation & Storage

Storage

Store at -20°C Valid for 12 months. Avoid freeze / thaw cycles.

Shipping

The product is shipped with ice pack, upon receipt, store it immediately at the temperature recommended.

Background

Cytokeratin 18 (CK18) has a molecular weight of 45 KDa, which is a low molecular weight type A cytokeratin. It is a marker of simple epithelium, including glandular epithelium. The stratified squamous epithelium is generally negative. CK18 is mainly used in the diagnosis of adenocarcinoma.