

Recombinant Human Coagulation Factor IX/F9 Protein (His Tag)

Catalog Number: PKSH032264

Note: Centrifuge before opening to ensure complete recovery of vial contents.

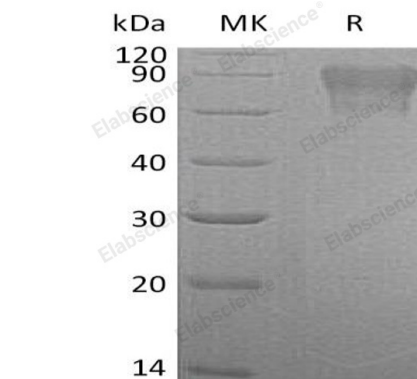
Description

Species	Human
Source	HEK293 Cells-derived Human Coagulation Factor IX;F9 protein Thr 29-Thr461, with an C-terminal His
Calculated MW	49.8 kDa
Observed MW	60-90 kDa
Accession	P00740
Bio-activity	Not validated for activity

Properties

Purity	> 95 % as determined by reducing SDS-PAGE.
Concentration	Subject to label value.
Endotoxin	< 1.0 EU per µg of the protein as determined by the LAL method.
Storage	Store at < -20°C, stable for 6 months. Please minimize freeze-thaw cycles.
Shipping	This product is provided as liquid. It is shipped at frozen temperature with blue ice/gel packs. Upon receipt, store it immediately at < -20°C.
Formulation	Supplied as a 0.2 µm filtered solution of 20mM Tris-HCl, 150mM NaCl, 10% Glycerol, pH 8.0.

Data



> 95 % as determined by reducing SDS-PAGE.

Background

Coagulation factor IX (F9), is a member of the peptidase S1 family. It contains two EGF-like domains, a Gla domain and a peptidase S1 domain. It is primarily expressed in the liver and secreted in plasma. Factor IX is a vitamin K-dependent plasma protein that participates in the intrinsic pathway of blood coagulation by converting factor X to its active form in the presence of Ca²⁺ ions, phospholipids, and factor VIIIa. Mutations in position 43 and 46 prevents cleavage of the propeptide, mutation in position 93 probably fails to bind to cell membranes, mutation in position 191 or in position 226 prevent cleavage of the activation peptide. Mutations of human F9 can result in thrombophilia and recessive X-linked hemophilia B (HEMB). An X-linked blood coagulation disorder characterized by a permanent tendency to hemorrhage, due to factor IX deficiency. It is phenotypically similar to hemophilia A, but patients present with fewer symptoms. Many patients are asymptomatic until the hemostatic system is stressed by surgery or trauma.

For Research Use Only