

PerCP/Cyanine5.5 Anti-Mouse CD62L Antibody[MEL-14]

Catalog Number: E-AB-F1011J

Note: Centrifuge before opening to ensure complete recovery of vial contents.

Description

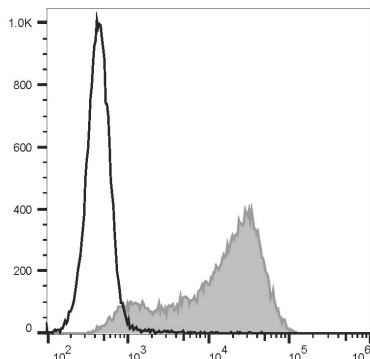
Reactivity	Mouse
Host	Rat
Isotype	Rat IgG2a, κ
Clone No.	MEL-14
Isotype Control	PerCP/Cyanine5.5 Rat IgG2a, κ Isotype Control[2A3] [Product E-AB-F09832J]
Conjugation	PerCP/Cyanine 5.5
Conjugation Information	PerCP/Cyanine5.5 is designed to be excited by the blue laser (488 nm) and detected using an optical filter centered near 675 nm (e.g., a 690/50 nm bandpass filter).
Storage Buffer	Phosphate buffered solution, pH 7.2, containing 0.09% stabilizer and 1% protein protectant.

Applications

Recommended usage

FCM	Each lot of this antibody is quality control tested by flow cytometric analysis. The amount of the reagent is suggested to be used 5 μL of antibody per test (million cells in 100 μL staining volume or per 100 μL of whole blood). Please check your vial before the experiment. Since applications vary, the appropriate dilutions must be determined for individual use.
------------	--

Data



Staining of C57BL/6 murine splenocytes with PerCP/Cyanine5.5 Anti-Mouse CD62L Antibody[MEL14] (filled gray histogram) or PerCP/Cyanine5.5 Rat IgG2a, κ Isotype Control (empty black histogram). Total viable cells were used for analysis.

Preparation & Storage

Storage	Keep as concentrated solution. This product can be stored at 2-8°C for 12 months. Please protected from prolonged exposure to light and do not freeze.
Shipping	Ice bag

Antigen Information

Alternate Names	CD62L;CD62 antigen-like family member L;L-selectin;LAM-1;LECAM1;Lnhr;Ly-22;Ly22;Lymph node homing receptor;Sell
------------------------	---

For Research Use Only

Uniprot ID

P18337

Gene ID

20343

Background

CD62L is a 74-95 kD glycoprotein also known as L-selectin, LECAM-1, Ly-22, LAM-1, and MEL-14. It is a member of the selectin family and is expressed on the majority of B and naïve T cells, a subset of memory T cells, monocytes, granulocytes, most thymocytes, and a subset of NK cells. CD62L is important in lymphocyte homing to high endothelial venules (HEV) in peripheral lymph nodes and leukocyte 'rolling' on activated endothelium. CD62L also contributes to neutrophil emigration at inflammatory sites. CD62L is rapidly shed from lymphocytes and neutrophils upon cellular activation and the expression levels of CD62L (in conjunction with other markers) have been used to distinguish naïve, effector, and memory T cells. CD62L has been reported to interact with CD34, GlyCAM-1, and MAdCAM-1.

For Research Use Only