

Galectin 3 Monoclonal Antibody

catalog number: E-AB-22184

Note: Centrifuge before opening to ensure complete recovery of vial contents.

Description

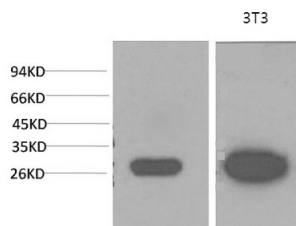
Reactivity	Human;Mouse
Immunogen	Protein
Host	Mouse
Isotype	IgG
Clone	8D7
Purification	Protein A purification
Buffer	Phosphate buffered solution, pH 7.4, containing 0.05% stabilizer, 0.5% protein protectant and 50% glycerol.

Applications

Recommended Dilution

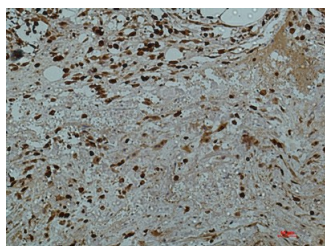
WB	1:2000-5000
IHC	1:100-200

Data

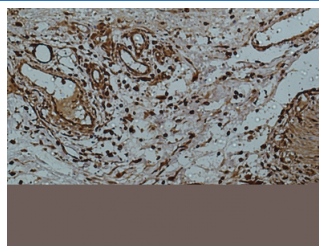


Western Blot analysis of 1) MCF-7, 2) 3T3 cells using Galectin 3 Monoclonal Antibody at dilution of 1:2000.

Observed-MW:26 kDa



Immunohistochemistry of paraffin-embedded Human colon tissue using Galectin 3 Monoclonal Antibody at dilution of 1:50.



Immunohistochemistry of paraffin-embedded Human colon using Galectin 3 Monoclonal Antibody at dilution of 1:50.

Preparation & Storage

Storage	Store at -20°C Valid for 12 months. Avoid freeze / thaw cycles.
Shipping	The product is shipped with ice pack, upon receipt, store it immediately at the temperature recommended.

Background

For Research Use Only

Galactose-specific lectin which binds IgE. May mediate with the alpha-3, beta-1 integrin the stimulation by CSPG4 of endothelial cells migration. Together with DMBT1, required for terminal differentiation of columnar epithelial cells during early embryogenesis.

For Research Use Only

Toll-free: 1-888-852-8623
Web: www.elabscience.com

Tel: 1-832-243-6086
Email: techsupport@elabscience.com

Fax: 1-832-243-6017

Rev. V1.7