

## HSPA5 Polyclonal Antibody

catalog number: D-AB-10170L

**Note:** Centrifuge before opening to ensure complete recovery of vial contents.

### Description

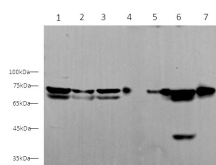
<b>Reactivity</b>	Human;Mouse
<b>Immunogen</b>	Recombinant Human HSPA5 protein expressed by E.coli
<b>Host</b>	Rabbit
<b>Isotype</b>	IgG
<b>Purification</b>	Antigen Affinity Purification
<b>Conjugation</b>	Unconjugated
<b>Buffer</b>	PBS with 0.05% proclin 300, 1% protective protein and 50% glycerol,pH7.4

### Applications

### Recommended Dilution

<b>WB</b>	1:500-1:1000
-----------	--------------

### Data



Western blot with HSPA5 Polyclonal antibody at dilution of 1:500.lane 1:Hela whole cell lysate,lane 2:Jurkat whole cell lysate,lane 3:THP-1 whole cell lysate,lane 4:HT-29 whole cell lysate,lane 5:NIH/3T3 whole cell lysate,lane 6:RAW264.7 whole cell lysate,lane 7:Mouse lung

**Observed-MW:75 kDa**

**Calculated-MW:72 kDa**

### Preparation & Storage

<b>Storage</b>	Store at -20°C Valid for 12 months. Avoid freeze / thaw cycles.
<b>Shipping</b>	The product is shipped with ice pack,upon receipt,store it immediately at the temperature recommended.

### Background

Endoplasmic reticulum chaperone that plays a key role in protein folding and quality control in the endoplasmic reticulum lumen. Involved in the correct folding of proteins and degradation of misfolded proteins via its interaction with DNAJC10/ERdj5, probably to facilitate the release of DNAJC10/ERdj5 from its substrate. Acts as a key repressor of the ERN1/IRE1-mediated unfolded protein response (UPR). In the unstressed endoplasmic reticulum, recruited by DNAJB9/ERdj4 to the luminal region of ERN1/IRE1, leading to disrupt the dimerization of ERN1/IRE1, thereby inactivating ERN1/IRE1.

### For Research Use Only