

CD163 Polyclonal Antibody(Capture/Detector)

catalog number: AN000860P

Note: Centrifuge before opening to ensure complete recovery of vial contents.

Description

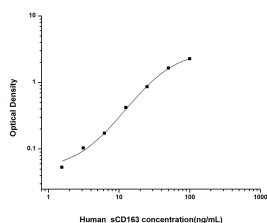
Reactivity	Human
Immunogen	Recombinant Human CD163 protein expressed by Mammalian
Host	Rabbit
Isotype	Rabbit IgG
Purification	Antigen Affinity Purification
Conjugation	Unconjugated
buffer	Phosphate buffered solution, pH 7.2, containing 0.05% proclin 300.

Applications

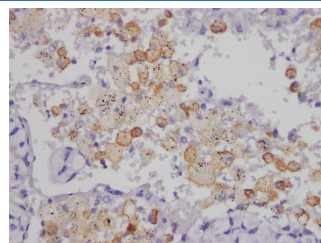
Recommended Dilution

ELISA Capture	2-8 µg/mL
ELISA Detector	0.1-0.4 µg/mL
IHC	1:500-1:1000

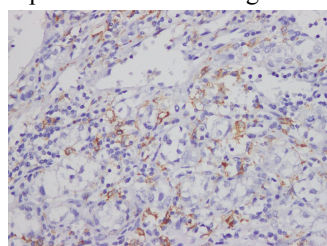
Data



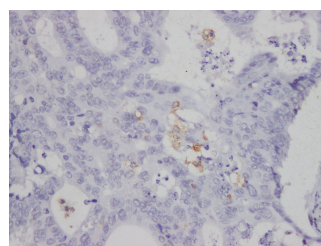
Sandwich ELISA-Recombinant Human CD163 protein standard curve. Background subtracted standard curve using CD163 antibody(AN000860P)(Capture), CD163 antibody(AN000860P)(Detector) in sandwich ELISA. The reference range value for Recombinant Human CD163 protein is 1.56-100 ng/mL.



Immunohistochemistry of paraffin-embedded Human lung cancer using CD163 Polyclonal Antibody at dilution of 1:1200.



Immunohistochemistry of paraffin-embedded Human liver cancer using CD163 Polyclonal Antibody at dilution of 1:1200.



Immunohistochemistry of paraffin-embedded Human colon carcinoma using CD163 Polyclonal Antibody at dilution of 1:1200.

Preparation & Storage

Storage	Store at 4°C valid for 12 months or -20°C valid for long term storage, avoid freeze / thaw cycles.
Shipping	The product is shipped with ice pack, upon receipt, store it immediately at the temperature recommended.

Background

For Research Use Only

CD163 Polyclonal Antibody(Capture/Detector)

catalog number: AN000860P



The protein encoded by this gene is a member of the scavenger receptor cysteine-rich (SRCR) superfamily, and is exclusively expressed in monocytes and macrophages. It functions as an acute phase-regulated receptor involved in the clearance and endocytosis of hemoglobin/haptoglobin complexes by macrophages, and may thereby protect tissues from free hemoglobin-mediated oxidative damage. This protein may also function as an innate immune sensor for bacteria and inducer of local inflammation. Alternatively spliced transcript variants encoding different isoforms have been described for this gene.

For Research Use Only

A Reliable Research Partner in Life Science and Medicine
Tel: 400-999-2100

Email: techsupport@elabscience.cn

Web: www.elabscience.cn

Rev. V1.5