

FSH beta Polyclonal Antibody

catalog number: E-AB-40593

Note: Centrifuge before opening to ensure complete recovery of vial contents.

Description

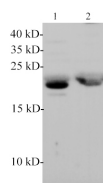
Reactivity	Mouse;Rat
Immunogen	Recombinant Rat FSH beta protein expressed by E.coli.
Host	Rabbit
Isotype	IgG
Purification	Antigen Affinity Purification
Conjugation	Unconjugated
Buffer	PBS with 0.05% proclin 300, 1% protective protein and 50% glycerol,pH7.4

Applications

Recommended Dilution

WB	1:500-2000
-----------	------------

Data



Western blotting with anti-FSH beta polyclonal antibody at dilution of 1:1000. Lane 1: Mouse pituitary lysate, Lane 2: Rat pituitary lysate.

Observed-MW:23 kDa

Calculated-MW:15 kDa

Preparation & Storage

Storage	Store at -20°C Valid for 12 months. Avoid freeze / thaw cycles.
Shipping	The product is shipped with ice pack,upon receipt,store it immediately at the temperature recommended.

Background

Follicle-stimulating hormone (FSH; also follitropin) is a 33 kDa heterodimer belonging to the glycoprotein hormones subunit beta family. The heterodimer is composed of two glycoproteins linked noncovalently: a common alpha subunit, which is also a component of luteinizing hormone, thyroid stimulating hormone, and chorionic gonadotropin; and a unique beta subunit that confers the protein's specific biological action and is responsible for the interaction with FSH-receptor.

For Research Use Only