

FOXQ1 Polyclonal Antibody

catalog number: E-AB-19882

Note: Centrifuge before opening to ensure complete recovery of vial contents.

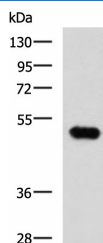
Description

| | |
|---------------------|------------------------------------------------------------------------------------|
| Reactivity | Human |
| Immunogen | Synthetic peptide of human FOXQ1 |
| Host | Rabbit |
| Isotype | IgG |
| Purification | Antigen affinity purification |
| Buffer | Phosphate buffered solution, pH 7.4, containing 0.05% stabilizer and 50% glycerol. |

Applications

| Applications | Recommended Dilution |
|--------------|----------------------|
| WB | 1:500-1:2000 |
| IHC | 1:25-1:50 |

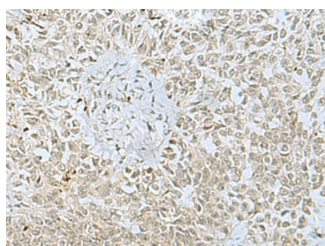
Data



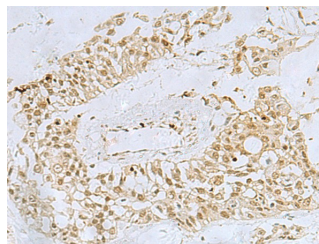
Western blot analysis of Mouse kidney tissue lysate using FOXQ1 Polyclonal Antibody at dilution of 1:750

Observed-MW: Refer to figures

Calculated-MW: 42 kDa



Immunohistochemistry of paraffin-embedded Human ovarian cancer tissue using FOXQ1 Polyclonal Antibody at dilution of 1:30 (x200)



Immunohistochemistry of paraffin-embedded Human colorectal cancer tissue using FOXQ1 Polyclonal Antibody at dilution of 1:30 (x200)

Preparation & Storage

| | |
|-----------------|----------------------------------------------------------------------------------------------------------|
| Storage | Store at -20°C Valid for 12 months. Avoid freeze / thaw cycles. |
| Shipping | The product is shipped with ice pack, upon receipt, store it immediately at the temperature recommended. |

Background

FOXQ1 is a member of the FOX gene family, which is characterized by a conserved 110-amino acid DNA-binding motif called the forkhead or winged helix domain. FOX genes are involved in embryonic development, cell cycle regulation, tissue-specific gene expression, cell signaling, and tumorigenesis (Bieller et al., 2001 [PubMed 11747606]).

For Research Use Only