

SCAF4 Polyclonal Antibody

catalog number: E-AB-92312

Note: Centrifuge before opening to ensure complete recovery of vial contents.

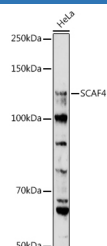
Description

Reactivity	Human;Mouse;Rat
Immunogen	Recombinant fusion protein of human SCAF4
Host	Rabbit
Isotype	IgG
Purification	Affinity purification
Buffer	Phosphate buffered solution, pH 7.4, containing 0.05% stabilizer and 50% glycerol.

Applications

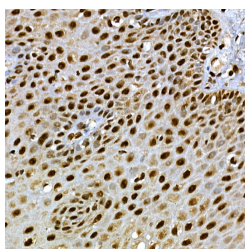
WB	1:500-1:2000
IHC	1:50-1:200

Data

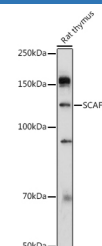
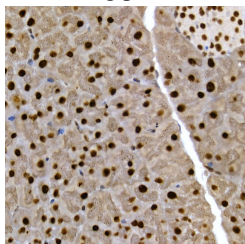


Western blot analysis of extracts of HeLa cells using SCAF4 Polyclonal Antibody at 1:1000 dilution.

Observed-MW:126 kDa
Calculated-MW:125 kDa

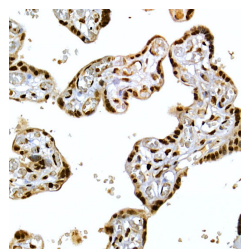


Immunohistochemistry of paraffin-embedded human esophagus using SCAF4 Polyclonal Antibody at dilution of 1:50 (40x lens). Perform high pressure antigen retrieval with 10 mM citrate buffer pH 6.0 before commencing with IHC staining protocol.

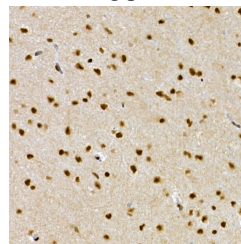


Western blot analysis of extracts of Rat thymus using SCAF4 Polyclonal Antibody at 1:1000 dilution.

Observed-MW:126 kDa
Calculated-MW:125 kDa



Immunohistochemistry of paraffin-embedded human placenta using SCAF4 Polyclonal Antibody at dilution of 1:50 (40x lens). Perform high pressure antigen retrieval with 10 mM citrate buffer pH 6.0 before commencing with IHC staining protocol.



For Research Use Only

<p>Immunohistochemistry of paraffin-embedded mouse pancreas using SCAF4 Polyclonal Antibody at dilution of 1:50 (40x lens). Perform high pressure antigen retrieval with 10 mM citrate buffer pH 6.0 before commencing with IHC staining protocol.</p>	<p>Immunohistochemistry of paraffin-embedded rat brain using SCAF4 Polyclonal Antibody at dilution of 1:50 (40x lens). Perform high pressure antigen retrieval with 10 mM citrate buffer pH 6.0 before commencing with IHC staining protocol.</p>
--	---

Preparation & Storage

Storage	Store at -20°C Valid for 12 months. Avoid freeze / thaw cycles.
Shipping	The product is shipped with ice pack, upon receipt, store it immediately at the temperature recommended.

Background

This gene likely encodes a member of the arginine/serine-rich splicing factor family. A similar protein in Rat appears to bind the large subunit of RNA polymerase II and provide a link between transcription and pre-mRNA splicing. Alternatively spliced transcript variants have been described.

For Research Use Only