

Recombinant Human CRELD2 Protein (His Tag)

Catalog Number: PKSH032332

Note: Centrifuge before opening to ensure complete recovery of vial contents.

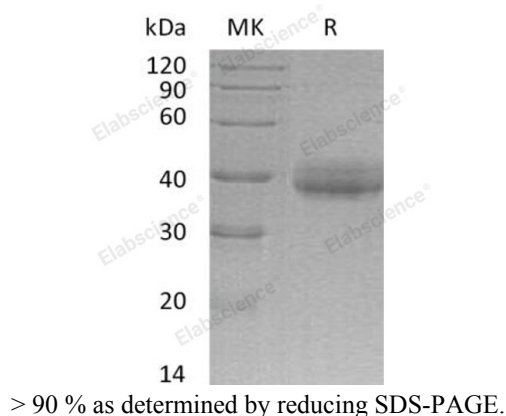
Description

Species	Human
Source	HEK293 Cells-derived Human CRELD2 protein Ala25-Leu321, with an C-terminal His
Calculated MW	33.4 kDa
Observed MW	32-45 kDa
Accession	Q6UXH1-2
Bio-activity	Not validated for activity

Properties

Purity	> 90 % as determined by reducing SDS-PAGE.
Endotoxin	< 1.0 EU per µg of the protein as determined by the LAL method.
Storage	Generally, lyophilized proteins are stable for up to 12 months when stored at -20 to -80 °C. Reconstituted protein solution can be stored at 4-8°C for 2-7 days. Aliquots of reconstituted samples are stable at < -20°C for 3 months.
Shipping	This product is provided as lyophilized powder which is shipped with ice packs.
Formulation	Lyophilized from a 0.2 µm filtered solution of PBS, 5%Trehalose, pH 7.4. Normally 5% - 8% trehalose, mannitol and 0.01% Tween 80 are added as protectants before lyophilization. Please refer to the specific buffer information in the printed manual.
Reconstitution	Please refer to the printed manual for detailed information.

Data



Background

Cysteine-Rich with EGF-Like Domain Protein 2 (CRELD2) is a secreted protein that is a member of the CRELD family. Human CRELD2 is synthesized as a 353 amino acid precursor protein with a signal peptide, a highly conserved domain rich in glutamic acid and tryptophan (WE) and EGF-like repeats. CRELD2 is ubiquitously expressed in many tissues. CRELD2 may interact with CHRNA4 and regulate transport of $\alpha 4\beta 2$ neuronal acetylcholine receptor. In addition, CRELD2 could be a novel mediator in regulating the onset and progression of various ER stress-associated diseases.

For Research Use Only

Toll-free: 1-888-852-8623
Web: www.elabscience.com

Tel: 1-832-243-6086
Email: techsupport@elabscience.com

Fax: 1-832-243-6017