

KCNN3 Polyclonal Antibody

catalog number: E-AB-52084

Note: Centrifuge before opening to ensure complete recovery of vial contents.

Description

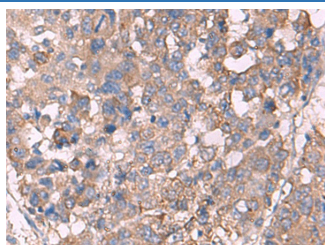
Reactivity	Human;Mouse;Rat
Immunogen	Synthetic peptide of human KCNN3
Host	Rabbit
Isotype	IgG
Purification	Antigen affinity purification
Conjugation	Unconjugated
buffer	Phosphate buffered solution, pH 7.4, containing 0.05% stabilizer and 50% glycerol.

Applications

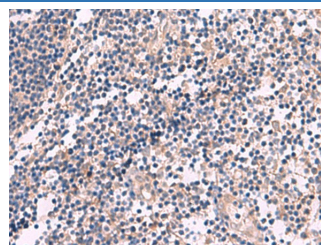
Recommended Dilution

IHC	1:50-1:300
------------	------------

Data



Immunohistochemistry of paraffin-embedded Human liver cancer tissue using KCNN3 Polyclonal Antibody at dilution of 1:60($\times 200$)



Immunohistochemistry of paraffin-embedded Human tonsil tissue using KCNN3 Polyclonal Antibody at dilution of 1:60($\times 200$)

Preparation & Storage

Storage	Store at -20°C Valid for 12 months. Avoid freeze / thaw cycles.
Shipping	The product is shipped with ice pack, upon receipt, store it immediately at the temperature recommended.

Background

KCNN3 (Potassium Calcium-Activated Channel Subfamily N Member 3) is a Protein Coding gene. Diseases associated with KCNN3 include Spinocerebellar Ataxia 2 and Bipolar Disorder. Among its related pathways are Insulin secretion and Transmission across Chemical Synapses. GO annotations related to this gene include protein heterodimerization activity and calcium-activated potassium channel activity. An important paralog of this gene is KCNN2. Action potentials in vertebrate neurons are followed by an afterhyperpolarization (AHP) that may persist for several seconds and may have profound consequences for the firing pattern of the neuron. Each component of the AHP is kinetically distinct and is mediated by different calcium-activated potassium channels. This gene belongs to the KCNN family of potassium channels. It encodes an integral membrane protein that forms a voltage-independent calcium-activated channel, which is thought to regulate neuronal excitability by contributing to the slow component of synaptic AHP. This gene contains two CAG repeat regions in the coding sequence. It was thought that expansion of one or both of these repeats could lead to an increased susceptibility to schizophrenia or bipolar disorder, but studies indicate that this is probably not the case. Alternatively spliced transcript variants encoding different isoforms have been found for this gene.

For Research Use Only