

## Chromogranin A Polyclonal Antibody

**catalog number: E-AB-40339**

**Note:** Centrifuge before opening to ensure complete recovery of vial contents.

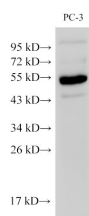
### Description

<b>Reactivity</b>	Human;Mouse
<b>Immunogen</b>	Recombinant Mouse Chromogranin-A protein
<b>Host</b>	Rabbit
<b>Isotype</b>	IgG
<b>Purification</b>	Antigen Affinity Purification
<b>Buffer</b>	PBS with 0.05% Proclin300, 1% protective protein and 50% glycerol, pH7.4

### Applications Recommended Dilution

<b>WB</b>	1:500-1:1000
<b>IHC</b>	1:100-1:300

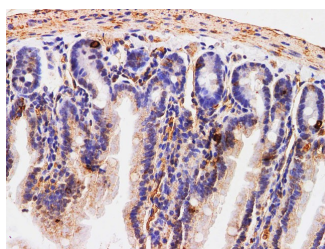
### Data



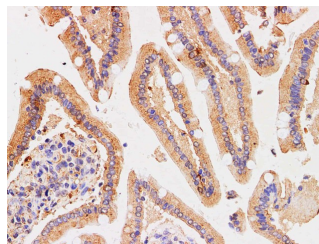
Western Blot analysis of PC-3 cells using Chromogranin A Polyclonal Antibody at dilution of 1:500

**Observed-MW:51 kDa**

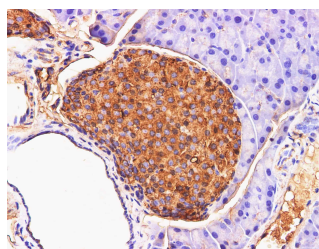
**Calculated-MW:51 kDa**



Immunohistochemistry of paraffin-embedded Mouse small intestine using Chromogranin A Polyclonal Antibody at dilution of 1:200



Immunohistochemistry of paraffin-embedded Human duodenum using Chromogranin A Polyclonal Antibody at dilution of 1:200



Immunohistochemistry of paraffin-embedded Mouse pancreas using Chromogranin A Polyclonal Antibody at dilution of 1:200

### Preparation & Storage

<b>Storage</b>	Store at -20°C Valid for 12 months. Avoid freeze / thaw cycles.
<b>Shipping</b>	The product is shipped with ice pack, upon receipt, store it immediately at the temperature recommended.

### Background

### For Research Use Only

Chromogranin A is a member of the granin family of neuroendocrine secretory proteins. It is located in secretory vesicles of neurons and endocrine cells. Chromogranin A is the precursor to several functional peptides including vasostatin, pancreastatin, catestatin and parastatin. These peptides negatively modulate the neuroendocrine function of the releasing cell (autocrine) or nearby cells (paracrine). CgA is one of the most used tumor markers in NET's (neuroendocrine tumors), and elevated CgA concentrations have been demonstrated in serum or plasma of patients with different types of these tumors.