

PE/Cyanine5 Anti-Human HLA-A2,B7 Antibody[BB7.6]

Catalog Number: AN00634G

Note: Centrifuge before opening to ensure complete recovery of vial contents.

Description

| | |
|--------------------------------|--|
| Reactivity | Human |
| Host | Mouse |
| Isotype | Mouse IgG1 |
| Clone No. | BB7.6 |
| Isotype Control | PE/Cyanine5 Mouse IgG1, κ Isotype Control[MOPC-21] [Product E-AB-F09792G] |
| Conjugation | PE/Cyanine 5 |
| Conjugation Information | PE/Cyanine5 is designed to be excited by the Blue (488 nm), Green (532 nm) and yellow-green (561 nm) lasers and detected using an optical filter centered near 670 nm (e.g., a 690/50 nm bandpass filter). |
| Storage Buffer | Phosphate buffered solution, pH 7.2, containing 0.09% sodium azide and 1% BSA. |

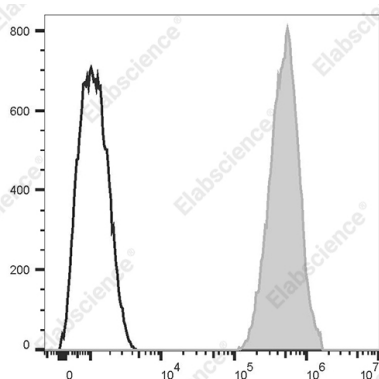
Applications

Recommended usage

FCM

Each lot of this antibody is quality control tested by flow cytometric analysis. **The amount of the reagent is suggested to be used 5 μL of antibody per test (millie cells in 100 μL staining volume or per 153 μL of whole blood).** Please check your vial before the experiment. Since applications vary, the appropriate dilutions must be determined for individual use.

Data



Staining of normal human peripheral blood cells with PE/Cyanine5 Anti-Human HLA-A2,B7 Antibody[BB7.6] (filled gray histogram) or PE/Cyanine5 Mouse IgG1, κ Isotype Control (empty black histogram). Cells in the lymphocytes gate were used for analysis.

Preparation & Storage

| | |
|-----------------|---|
| Storage | Keep as concentrated solution. This product can be stored at 2-8°C for 12 months. Please protected from prolonged exposure to light and do not freeze. |
| Shipping | Ice bag |

Antigen Information

| | |
|------------------------|---|
| Alternate Names | MHC-class I;HLA-B*07;HLA Class I histocompatibility antigen B alpha chain |
| Uniprot ID | P04439 |

For Research Use Only

Gene ID

3105

Background

HLA-A2 is most common in Northern Asia and North America populations. MHC class I antigens associated with β 2-microglobulin are expressed by all human nucleated cells. MHC class I molecules are involved in presentation of antigens to CD8+ T cells, playing an important role in cell-mediated immune responses and tumor surveillance. HLA-B belongs to the HLA class I heavy chain paralogues. HLA-B7 is a serotype of HLA-A-B and one of the common HLA types. MHC class I heavy chains associate with β 2-microglobulin and are expressed on nearly all nucleated cells. MHC class I molecules are involved in the presentation of antigens to CD8+ T cells and thereby play an important role in cell-mediated immune responses and immune surveillance.