

FOLH1B Polyclonal Antibody

catalog number: E-AB-16440

Note: Centrifuge before opening to ensure complete recovery of vial contents.

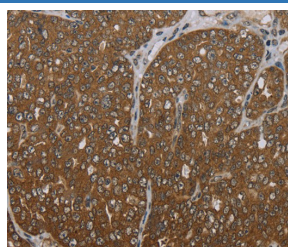
Description

Reactivity	Human
Immunogen	Synthetic peptide of human FOLH1B
Host	Rabbit
Isotype	IgG
Purification	Affinity purification
Buffer	Phosphate buffered solution, pH 7.4, containing 0.05% stabilizer and 50% glycerol.

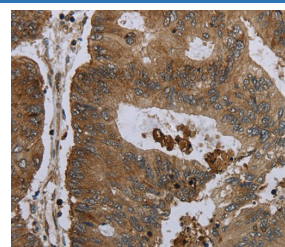
Applications Recommended Dilution

IHC	1:50-1:200
------------	------------

Data



1:30



1:30

Immunohistochemistry of paraffin-embedded Human ovarian cancer tissue using FOLH1B Polyclonal Antibody at dilution 1:30
Immunohistochemistry of paraffin-embedded Human colon cancer tissue using FOLH1B Polyclonal Antibody at dilution 1:30

Preparation & Storage

Storage	Store at -20°C Valid for 12 months. Avoid freeze / thaw cycles.
Shipping	The product is shipped with ice pack, upon receipt, store it immediately at the temperature recommended.

Background

PSM is an integral membrane protein, and PCTA-1 is related to the galectin gene family, which mediate both cell-cell and cell-matrix interactions in a manner similar to the selectin subgroup of C-type lectins. STEAP is a serpentine transmembrane cell-surface tumor-antigen that is predicted to functions as a channel or transporter protein. In addition to prostate cancers, STEAP is also upregulated in bladder, colon and ovarian cancers.

For Research Use Only