

Elab Fluor® 700 Anti-Human IL-4 Antibody[MP4-25D2]

Catalog Number: E-AB-F1203M1

Note: Centrifuge before opening to ensure complete recovery of vial contents.

Description

Reactivity	Human
Host	Rat
Isotype	Rat IgG1, κ
Clone No.	MP4-25D2
Isotype Control	Elab Fluor® 700 Rat IgG1, κ Isotype Control[HRPN] [Product E-AB-F09822M1]
Conjugation	Elab Fluor® 700
Conjugation Information	Elab Fluor® 700 is designed to be excited by the Red laser (627-640 nm) and detected using an optical filter centered near 719 nm (e.g., a 725/40 nm bandpass filter).
Storage Buffer	Phosphate buffered solution, pH 7.2, containing 0.09% sodium azide and 1% BSA.

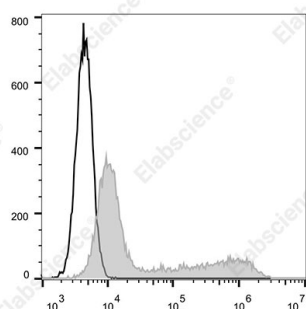
Applications

Recommended usage

FCM

Each lot of this antibody is quality control tested by flow cytometric analysis. **The amount of the reagent is suggested to be used 5 μL of antibody per test (million cells in 100 μL staining volume or per 100 μL of whole blood).** Please check your vial before the experiment. Since applications vary, the appropriate dilutions must be determined for individual use.

Data



Intracellular staining of the 293T cells transfected with pcDNA3.1 plasmid encoding Human IL-4 gene with Elab

Fluor® 700 Anti-Human IL-4 Antibody[MP4-25D2](filled gray histogram) or Elab Fluor® 700 Rat IgG1, κ Isotype Control(empty black histogram). Total viable cells were used for analysis.

Preparation & Storage

Storage	Keep as concentrated solution. This product can be stored at 2-8°C for 12 months. Please protected from prolonged exposure to light and do not freeze.
Shipping	Ice bag

Antigen Information

Alternate Names	B-cell IgG differentiation factor;B-cell growth factor 1;BSF-1;IGG1 induction factor;IL-4; Interleukin-4
------------------------	--

For Research Use Only

Uniprot ID

P05112

Gene ID

3565

Background

IL-4 is a pleiotropic cytokine that is produced by activated T cells, mast cells, and basophils. IL-4 elicits many different biological responses but has two dominant functions. The first is regulating differentiation of naïve CD4+ T cell to the Th2 type. Th2 cells produce IL-4, IL-5, IL-10, and IL-13, which tend to favor a humoral immune response while suppressing a cell-mediated immune response controlled by Th1 cells. The second is regulating IgE and IgG1 production by B cells.