

ZDHHC20 Polyclonal Antibody

Catalog Number:E-AB-91968



Note: Centrifuge before opening to ensure complete recovery of vial contents.

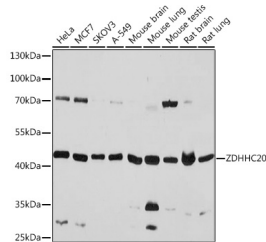
Description

Reactivity	Human,Mouse,Rat
Immunogen	A synthetic peptide of human ZDHHC20
Host	Rabbit
Isotype	IgG
Purification	Affinity purification
Conjugation	Unconjugated
Formulation	PBS with 0.01% thiomersal,50% glycerol,pH7.3.

Applications Recommended Dilution

WB	1:500-1:2000
-----------	--------------

Data



Western blot analysis of extracts of various cell lines using ZDHHC20 Polyclonal Antibody at 1:1000 dilution.

Observed MW:42kDa

Preparation & Storage

Storage Store at -20°C. Avoid freeze/thaw cycles.

Background

Palmitoyltransferase that could catalyze the addition of palmitate onto various protein substrates. Catalyzes palmitoylation of Cys residues in the cytoplasmic C-terminus of EGFR, and modulates the duration of EGFR signaling by modulating palmitoylation-dependent EGFR internalization and degradation. Has a preference for acyl-CoA with C16 fatty acid chains. Can also utilize acyl-CoA with C14 and C18 fatty acid chains.

For Research Use Only

A Reliable Research Partner in Life Science and Medicine

Toll-free: 1-888-852-8623

Web: www.elabscience.com

Tel: 1-832-243-6086

Email: techsupport@elabscience.com

Fax: 1-832-243-6017