

Recombinant Heme Oxygenase 1 Monoclonal Antibody

catalog number: AN301794L

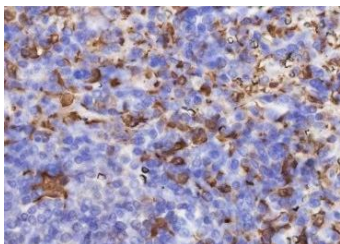
Note: Centrifuge before opening to ensure complete recovery of vial contents.

Description

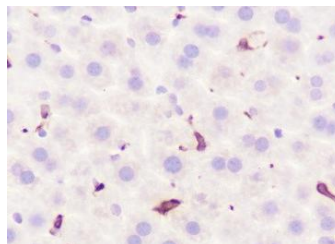
Reactivity	Human;Rat;Mouse
Immunogen	Recombinant human Heme Oxygenase 1 fragment
Host	Rabbit
Isotype	IgG, κ
Clone	A506
Purification	Protein A purified
Buffer	PBS, 50% glycerol, 0.05% Proclin 300, 0.05% protein protectant.

Applications Recommended Dilution

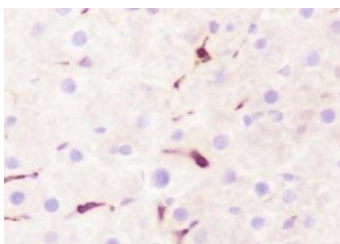
WB	1:2000-1:20000
IHC	1:1000-1:2000
IF	1:50
FCM	1:50-1:100
IP	1:25-1:100



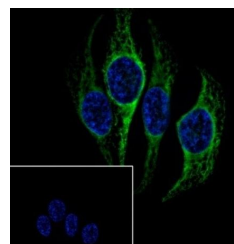
Immunohistochemistry of paraffin-embedded Human spleen using Heme Oxygenase 1 Monoclonal Antibody at dilution of 1:1000.



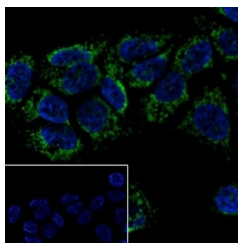
Immunohistochemistry of paraffin-embedded Mouse liver using Heme Oxygenase 1 Monoclonal Antibody at dilution of 1:2000.



Immunohistochemistry of paraffin-embedded Rat liver using Heme Oxygenase 1 Monoclonal Antibody at dilution of 1:2000.



Immunofluorescent analysis of (100% Ice-cold methanol) fixed HeLa cells using anti-Heme Oxygenase 1 Monoclonal Antibody at dilution of 1:50.



Immunofluorescent analysis of (100% Ice-cold methanol) fixed MCF7 cells using anti-Heme Oxygenase 1 Monoclonal Antibody at dilution of 1:50.

For Research Use Only

Toll-free: 1-888-852-8623
Web: www.elabscience.com

Tel: 1-832-243-6086
Email: techsupport@elabscience.com

Fax: 1-832-243-6017

Rev. V1.0

Preparation & Storage

Storage	Store at -20°C Valid for 12 months. Avoid freeze / thaw cycles.
Shipping	Ice bag

Background

Heme oxygenase 1 cleaves the heme ring at the alpha methene bridge to form biliverdin. Biliverdin is subsequently converted to bilirubin by biliverdin reductase. Under physiological conditions, the activity of heme oxygenase is highest in the spleen, where senescent erythrocytes are sequestered and destroyed.

For Research Use Only