

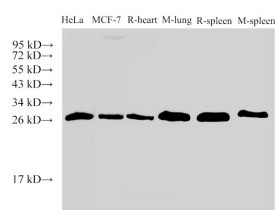
Galectin 3 Polyclonal Antibody

catalog number: E-AB-40380

Note: Centrifuge before opening to ensure complete recovery of vial contents.

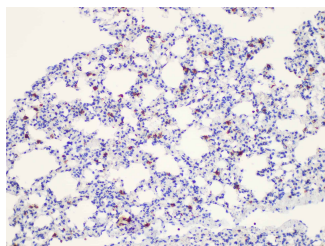
Description	
Reactivity	Human;Mouse;Rat
Immunogen	Recombinant Rat Galectin-3 protein
Host	Rabbit
Isotype	IgG
Purification	Antigen Affinity Purification
Conjugation	Unconjugated
Buffer	PBS with 0.05% Proclin300, 1% protective protein and 50% glycerol, pH7.4
Applications	Recommended Dilution
WB	1:500-1:2000
IHC	1:50-1:100

Data

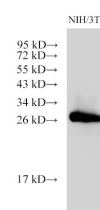


Western Blot analysis of 1)Hela, 2)MCF-7, 3)Rat heart, 4)Mouse lung, 5)Rat spleen, 6)Mouse spleen using Galectin 3 Polyclonal Antibody at dilution of 1:500.

Observed-MW:27 kDa
Calculated-MW:27 kDa

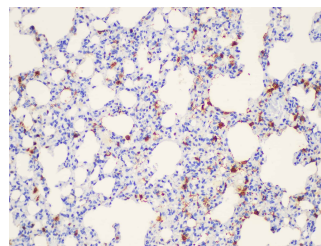


Immunohistochemistry of paraffin-embedded Mouse lung using Galectin 3 Polyclonal Antibody at dilution of 1:50.



Western Blot analysis of NIH/3T3 cells using Galectin 3 Polyclonal Antibody at dilution of 1:2000.

Observed-MW:27 kDa
Calculated-MW:27 kDa



Immunohistochemistry of paraffin-embedded Rat lung using Galectin 3 Polyclonal Antibody at dilution of 1:50.

Preparation & Storage

Storage	Store at -20°C Valid for 12 months. Avoid freeze / thaw cycles.
Shipping	The product is shipped with ice pack, upon receipt, store it immediately at the temperature recommended.

Background

Galectins are a family of animal lectins defined by shared characteristic amino-acid sequences and affinity for β -galactose-containing oligosaccharides. Galectin-3 contains one carbohydrate recognition domain (CRD) and a proline- and glycine-rich N-terminal domain through which is able to form oligomers. Galectin-3 is widely expressed in many normal tissues and a variety of tumors. It is found intracellularly in nucleus and cytoplasm or secreted outside of cell, being present on the cell surface or in the extracellular space. Galectin-3 is involved in various biological processes including cell growth, adhesion, differentiation, apoptosis, angiogenesis, immune response, neoplastic transformation and metastasis.