

GLS2 Polyclonal Antibody

catalog number: E-AB-18003

Note: Centrifuge before opening to ensure complete recovery of vial contents.

Description

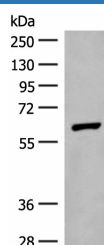
Reactivity	Human;Mouse;Rat
Immunogen	Synthetic peptide of human GLS2
Host	Rabbit
Isotype	IgG
Purification	Antigen affinity purification
Conjugation	Unconjugated
buffer	Phosphate buffered solution, pH 7.4, containing 0.05% stabilizer and 50% glycerol.

Applications

Recommended Dilution

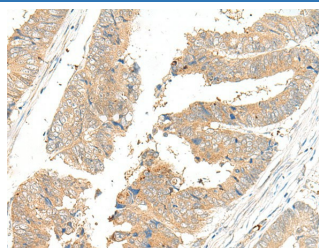
WB	1:500-1:2000
IHC	1:40-1:200

Data



Western blot analysis of Mouse liver tissue lysate using GLS2 Polyclonal Antibody at dilution of 1:400

Observed-MV: Refer to figures
Calculated-MV: 66 kDa



Immunohistochemistry of paraffin-embedded Human colorectal cancer tissue using GLS2 Polyclonal Antibody at dilution of 1:45 (×200)

Preparation & Storage

Storage	Store at -20°C Valid for 12 months. Avoid freeze / thaw cycles.
Shipping	The product is shipped with ice pack, upon receipt, store it immediately at the temperature recommended.

Background

The protein encoded by this gene is a mitochondrial phosphate-activated glutaminase that catalyzes the hydrolysis of glutamine to stoichiometric amounts of glutamate and ammonia. Originally thought to be liver-specific, this protein has been found in other tissues as well. Alternative splicing results in multiple transcript variants that encode different isoforms.

For Research Use Only