

Recombinant Human SerpinB3/SCCA1 Protein (His Tag)



Catalog Number:PKSH030698

Note: Centrifuge before opening to ensure complete recovery of vial contents.

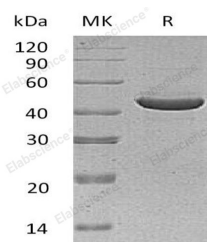
Description

Synonyms	Serpin B3;Protein T4-A;Squamous cell carcinoma antigen 1;SCCA-1;serine (or cysteine) proteinase inhibitor;clade B (ovalbumin);member 3;serpin peptidase inhibitor;clade B (ovalbumin);member 3;Squamous cell carcinoma antigen 1;T4-A;SCCA1;HsT1196;SCC;SCCA-1;SCCA-PD
Species	Human
Expression Host	Baculovirus-Insect Cells
Sequence	Asn 2-Pro 390
Accession	AAB20405.1
Calculated Molecular Weight	46.7 kDa
Observed molecular weight	43 kDa
Tag	N-His
Bioactivity	Measured by its ability to inhibit active Cathepsin L cleavage of a fluorogenic peptide substrate Z-LR-AMC, R&D Systems, Catalog # ES008. The IC ₅₀ is < 5 nM.

Properties

Purity	> 97 % as determined by reducing SDS-PAGE.
Endotoxin	< 1.0 EU per µg of the protein as determined by the LAL method.
Storage	Generally, lyophilized proteins are stable for up to 12 months when stored at -20 to -80°C. Reconstituted protein solution can be stored at 4-8°C for 2-7 days. Aliquots of reconstituted samples are stable at < -20°C for 3 months.
Shipping	This product is provided as lyophilized powder which is shipped with ice packs.
Formulation	Lyophilized from sterile 20mM Tris, 500mM NaCl, pH 7.4, 20% glycerol, 3mM DTT Normally 5 % - 8 % trehalose, mannitol and 0.01% Tween80 are added as protectants before lyophilization. Please refer to the specific buffer information in the printed m
Reconstitution	Please refer to the printed manual for detailed information.

Data



> 97 % as determined by reducing SDS-PAGE.

Background

SERPINB3, also known as SCCA-1, belongs to the serpin family. Serpins are a group of proteins with similar structures that were first identified as a set of proteins able to inhibit proteases. The acronym serpin was originally coined because

For Research Use Only

A Reliable Research Partner in Life Science and Medicine

Toll-free: 1-888-852-8623

Web: www.elabscience.com

Tel: 1-832-243-6086

Email: techsupport@elabscience.com

Fax: 1-832-243-6017

Recombinant Human SerpinB3/SCCA1 Protein (His Tag)



Catalog Number:PKSH030698

many serpins inhibit chymotrypsin-like serine proteases. SERPINB3 is expressed in some hepatocellular carcinoma (at protein level). Its expression is closely related to cellular differentiation in both normal and malignant squamous cells. It seems to also be secreted in plasma by cancerous cells but at a low level. SERPINB3 significantly attenuates apoptosis by contrasting cytochrome c release from the mitochondria and by antichemotactic effect for NK cells. It may act as a protease inhibitor to modulate the host immune response against tumor cells and may be involved in the malignant behavior of squamous cell carcinoma cells.

For Research Use Only

A Reliable Research Partner in Life Science and Medicine

Toll-free: 1-888-852-8623

Web: www.elabscience.com

Tel: 1-832-243-6086

Email: techsupport@elabscience.com

Fax: 1-832-243-6017