

## CNTN1 Polyclonal Antibody

**catalog number: E-AB-53529**

**Note:** Centrifuge before opening to ensure complete recovery of vial contents.

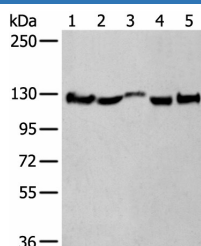
### Description

<b>Reactivity</b>	Human;Mouse;Rat
<b>Immunogen</b>	Synthetic peptide of human CNTN1
<b>Host</b>	Rabbit
<b>Isotype</b>	IgG
<b>Purification</b>	Antigen affinity purification
<b>Buffer</b>	Phosphate buffered solution, pH 7.4, containing 0.05% stabilizer and 50% glycerol.

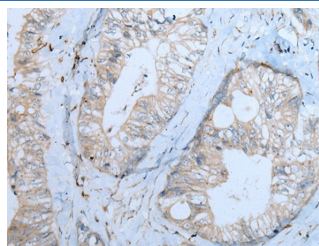
### Applications Recommended Dilution

<b>WB</b>	1:500-1:2000
<b>IHC</b>	1:35-1:200

### Data



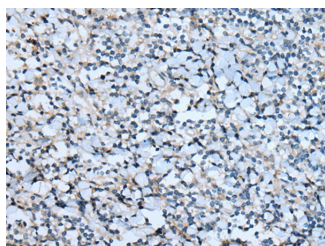
Western blot analysis of Rat brain tissue Mouse brain tissue Human fetal brain tissue Human cerebrum tissue Human cerebella tissue lysates using CNTN1 Polyclonal Antibody at dilution of 1:550



Immunohistochemistry of paraffin-embedded Human colorectal cancer tissue using CNTN1 Polyclonal Antibody at dilution of 1:55(×200)

**Observed-MW:Refer to figures**

**Calculated-MW:113 kDa**



Immunohistochemistry of paraffin-embedded Human tonsil tissue using CNTN1 Polyclonal Antibody at dilution of 1:55(×200)

### Preparation & Storage

<b>Storage</b>	Store at -20°C Valid for 12 months. Avoid freeze / thaw cycles.
<b>Shipping</b>	The product is shipped with ice pack,upon receipt,store it immediately at the temperature recommended.

### Background

### For Research Use Only

The protein encoded by this gene is a member of the immunoglobulin superfamily. It is a glycosylphosphatidylinositol (GPI)-anchored neuronal membrane protein that functions as a cell adhesion molecule. It may play a role in the formation of axon connections in the developing nervous system. Multiple alternatively spliced transcript variants encoding different isoforms have been found for this gene.

## For Research Use Only

Toll-free: 1-888-852-8623  
Web: [www.elabscience.com](http://www.elabscience.com)

Tel: 1-832-243-6086  
Email: [techsupport@elabscience.com](mailto:techsupport@elabscience.com)

Fax: 1-832-243-6017

Rev. V1.7