

E-Selectin/CD62E Polyclonal Antibody(Capture/Detector)

catalog number: AN002360P



Note: Centrifuge before opening to ensure complete recovery of vial contents.

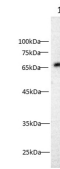
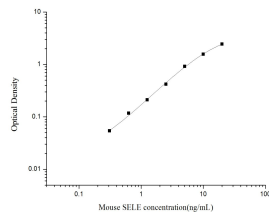
Description

Reactivity	Human;Mouse
Immunogen	Recombinant Mouse E-Selectin/CD62E protein expressed by Mammalian
Host	Rabbit
Isotype	Rabbit IgG
Purification	Antigen Affinity Purification
Conjugation	Unconjugated
buffer	Phosphate buffered solution, pH 7.2, containing 0.05% proclin 300.

Applications

Applications	Recommended Dilution
ELISA Capture	2-8 µg/mL
ELISA Detector	0.1-0.4 µg/mL
WB	1:250-1:500

Data



Sandwich ELISA-Recombinant Mouse E-Selectin/CD62E protein standard curve. Background subtracted standard curve using E-Selectin/CD62E antibody(AN002360P)(Capture), E-

Selectin/CD62E antibody(AN002360P)(Detector) in sandwich ELISA. The reference range value for Recombinant Mouse E-Selectin/CD62E protein is 0.31-20 ng/mL.

Western blot with Anti E-Selectin/CD62E Polyclonal antibody at dilution of 1:1000. Lane 1. Raji cell lysate.

Observed-MV: 67 kDa

Calculated-MV: 67 kDa

Preparation & Storage

Storage Store at 4°C valid for 12 months or -20°C valid for long term storage, avoid freeze / thaw cycles.

Shipping The product is shipped with ice pack, upon receipt, store it immediately at the temperature recommended.

Background

The protein encoded by this gene is found in cytokine-stimulated endothelial cells and is thought to be responsible for the accumulation of blood leukocytes at sites of inflammation by mediating the adhesion of cells to the vascular lining. It exhibits structural features such as the presence of lectin- and EGF-like domains followed by short consensus repeat (SCR) domains that contain 6 conserved cysteine residues. These proteins are part of the selectin family of cell adhesion molecules. Adhesion molecules participate in the interaction between leukocytes and the endothelium and appear to be involved in the pathogenesis of atherosclerosis.

For Research Use Only

A Reliable Research Partner in Life Science and Medicine
Tel: 400-999-2100

Email: techsupport@elabscience.cn

Web: www.elabscience.cn

Rev. V1.5