

Recombinant Human IA2/PTPRN Protein (aa 687-979, His Tag)

Catalog Number: PKSH032556

Note: Centrifuge before opening to ensure complete recovery of vial contents.

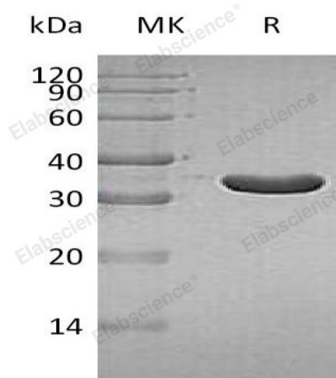
Description

Species	Human
Source	E.coli-derived Human IA2;PTPRN protein Met687-Gln979, with an N-terminal His
Calculated MW	35.6 kDa
Observed MW	33 kDa
Accession	Q16849
Bio-activity	Not validated for activity

Properties

Purity	> 95 % as determined by reducing SDS-PAGE.
Concentration	Subject to label value.
Endotoxin	< 1.0 EU per µg of the protein as determined by the LAL method.
Storage	Store at < -20°C, stable for 6 months. Please minimize freeze-thaw cycles.
Shipping	This product is provided as liquid. It is shipped at frozen temperature with blue ice/gel packs. Upon receipt, store it immediately at < - 20°C.
Formulation	Supplied as a 0.2 µm filtered solution of 20mM Tris-HCl, 150mM NaCl, pH 8.0.

Data



> 95 % as determined by reducing SDS-PAGE.

Background

Receptor-type tyrosine-protein phosphatase-like N (PTPRN) belongs to the protein-tyrosine phosphatase family and receptor class 8 subfamily. PTPRN contains 1 tyrosine-protein phosphatase domain; is expressed in neuroendocrine cells only. PTPs are known to be signaling molecules that regulate a variety of cellular processes including cell growth; differentiation; mitotic cycle; and oncogenic transformation. It implicated in neuroendocrine secretory processes. It may be involved in processes specific for neurosecretory granules; such as their biogenesis; trafficking or regulated exocytosis or may have a general role in neuroendocrine functions. It seems to lack intrinsic enzyme activity; may play a role in the regulation of secretory granules via its interaction with SNTB2. This PTP was found to be an autoantigen that is reactive with insulin-dependent diabetes mellitus (IDDM) patient sera; and thus may be a potential target of autoimmunity in diabetes mellitus.

For Research Use Only

Toll-free: 1-888-852-8623
Web: www.elabscience.com

Tel: 1-832-243-6086
Email: techsupport@elabscience.com

Fax: 1-832-243-6017