

Recombinant IRF3 Monoclonal Antibody

catalog number: **AN300949L**

Note: *Centrifuge before opening to ensure complete recovery of vial contents.*

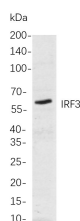
Description

Reactivity	Human;Mouse;Rat
Immunogen	Recombinant Human IRF3 protein
Host	Rabbit
Isotype	IgG, κ
Clone	B896
Purification	Protein A
Buffer	PBS, 50% glycerol, 0.05% Proclin 300, 0.05% protein protectant.

Applications Recommended Dilution

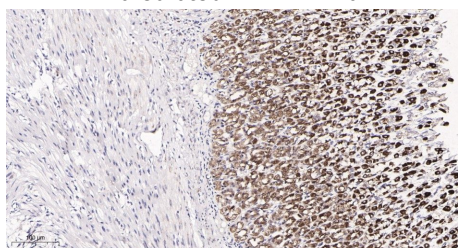
IHC	1:200-1:1000
WB	1:500-1:2000

Data

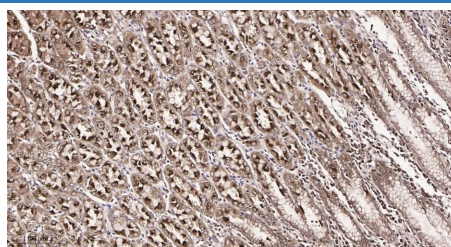


Western Blot with Recombinant IRF3 Monoclonal Antibody at dilution of 1:1000 dilution. Lane A: Hela cells.

Observed-MW:55 kDa
Calculated-MW:47 kDa



Immunohistochemistry of paraffin-embedded rat stomach tissue using Recombinant IRF3 Monoclonal Antibody at dilution of 1:200.



Immunohistochemistry of paraffin-embedded human stomach tissue using Recombinant IRF3 Monoclonal Antibody at dilution of 1:200.

Preparation & Storage

Storage	Store at -20°C Valid for 12 months. Avoid freeze / thaw cycles.
Shipping	Ice bag

Background

This gene encodes a member of the interferon regulatory transcription factor (IRF) family. The encoded protein is found in an inactive cytoplasmic form that upon serine/threonine phosphorylation forms a complex with CREBBP. This complex translocates to the nucleus and activates the transcription of interferons alpha and beta, as well as other interferon-induced genes. Alternatively spliced transcript variants encoding multiple isoforms have been observed for this gene.

For Research Use Only

Toll-free: 1-888-852-8623
Web: www.elabscience.com

Tel: 1-832-243-6086
Email: techsupport@elabscience.com

Fax: 1-832-243-6017

Rev. V1.1