

## PHACTR1 Polyclonal Antibody

**catalog number: E-AB-92174**

**Note:** Centrifuge before opening to ensure complete recovery of vial contents.

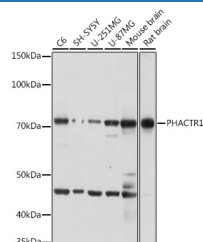
### Description

<b>Reactivity</b>	Human;Mouse;Rat
<b>Immunogen</b>	Recombinant fusion protein of human PHACTR1
<b>Host</b>	Rabbit
<b>Isotype</b>	IgG
<b>Purification</b>	Affinity purification
<b>Buffer</b>	Phosphate buffered solution, pH 7.4, containing 0.05% stabilizer and 50% glycerol.

### Applications Recommended Dilution

<b>WB</b>	1:1000-1:2000
-----------	---------------

### Data



Western blot analysis of extracts of various cell lines using PHACTR1 Polyclonal Antibody at 1:1000 dilution.

**Observed-MW:75 kDa**

**Calculated-MW:66 kDa**

### Preparation & Storage

<b>Storage</b>	Store at -20°C Valid for 12 months. Avoid freeze / thaw cycles.
<b>Shipping</b>	The product is shipped with ice pack, upon receipt, store it immediately at the temperature recommended.

### Background

The protein encoded by this gene is a member of the phosphatase and actin regulator family of proteins. This family member can bind actin and regulate the reorganization of the actin cytoskeleton. It plays a role in tubule formation and in endothelial cell survival. Polymorphisms in this gene are associated with susceptibility to myocardial infarction, coronary artery disease and cervical artery dissection. Alternative splicing of this gene results in multiple transcript variants.

### For Research Use Only